

Design Elements: Shades of Gray

Chris A. Paschke, CPF, GCF, CMG

Sponsored by Omega Moulding

West Coast Art & Frame Expo, Las Vegas 2019



Grey based neutral rooms are back from black last year and white a few years back.



And lots of texture.



Warmer earthy
palettes will
also dominate
and minimalism
will reign.



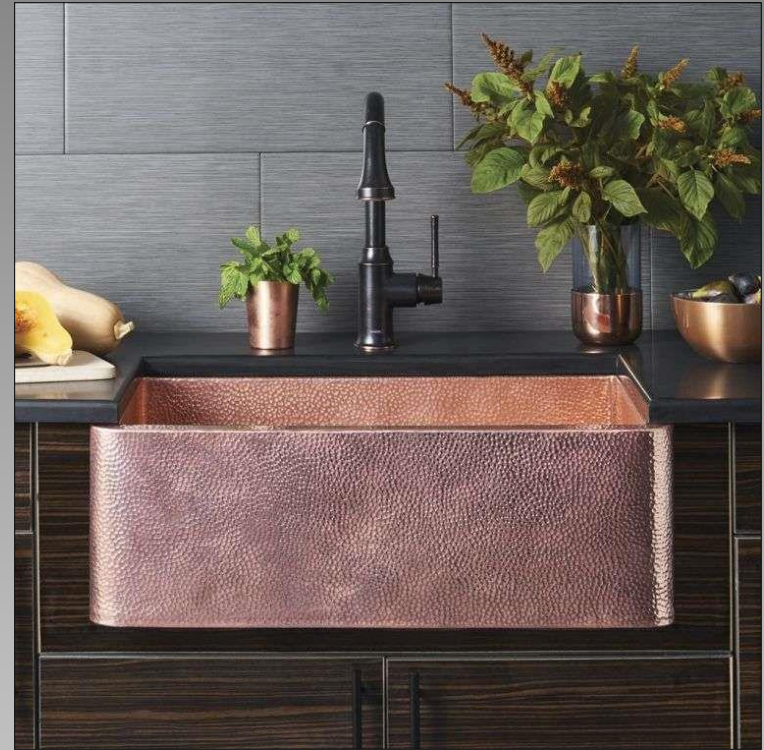
Metals in lamps, frames, mirrors both in rustic and natural designs. Ethnic textiles as cushions, chairs, curtains, and carpets.



Neutral backgrounds of white, gray, and black are accented with color and metallics.



Copper colors join the metallic ranks of popularity with gold and silver in 2019.



Softer copper tones and shades will also be seen in textures, fabrics and fashion.

*"Gray is the dominant shade of the decade
and today's default neutral."*

- Sue Kim

Valspar color strategist



Avant-garde styling will use warm and vibrant tones, that make a perfect balance with light or warm colors.

Art will be a dominant part of décor.

Larson-Juhl showcases a fabulous display of same format photos. Same frame, same mat with assorted sizes...using common line arrangement.



"Designers would be paralyzed without white."

- Andrea Magno
Benjamin Moore

Benjamin Moore offers more than 250 shades of white.



Neutral, neutral, neutral.



Outdoors and
contrasting wall adds
the color (L)

Contrast doesn't
always require
a strong color **pop**
to add emphasis





Neutral warm gray, taupe and white soften the look.



The hue of your walls impacts on your psychology.

Red increases appetite and raises blood pressure, so adversely white and off-white calms and soothes.

Basics Review

Black, white
and gray have
always been
considered
neutrals.

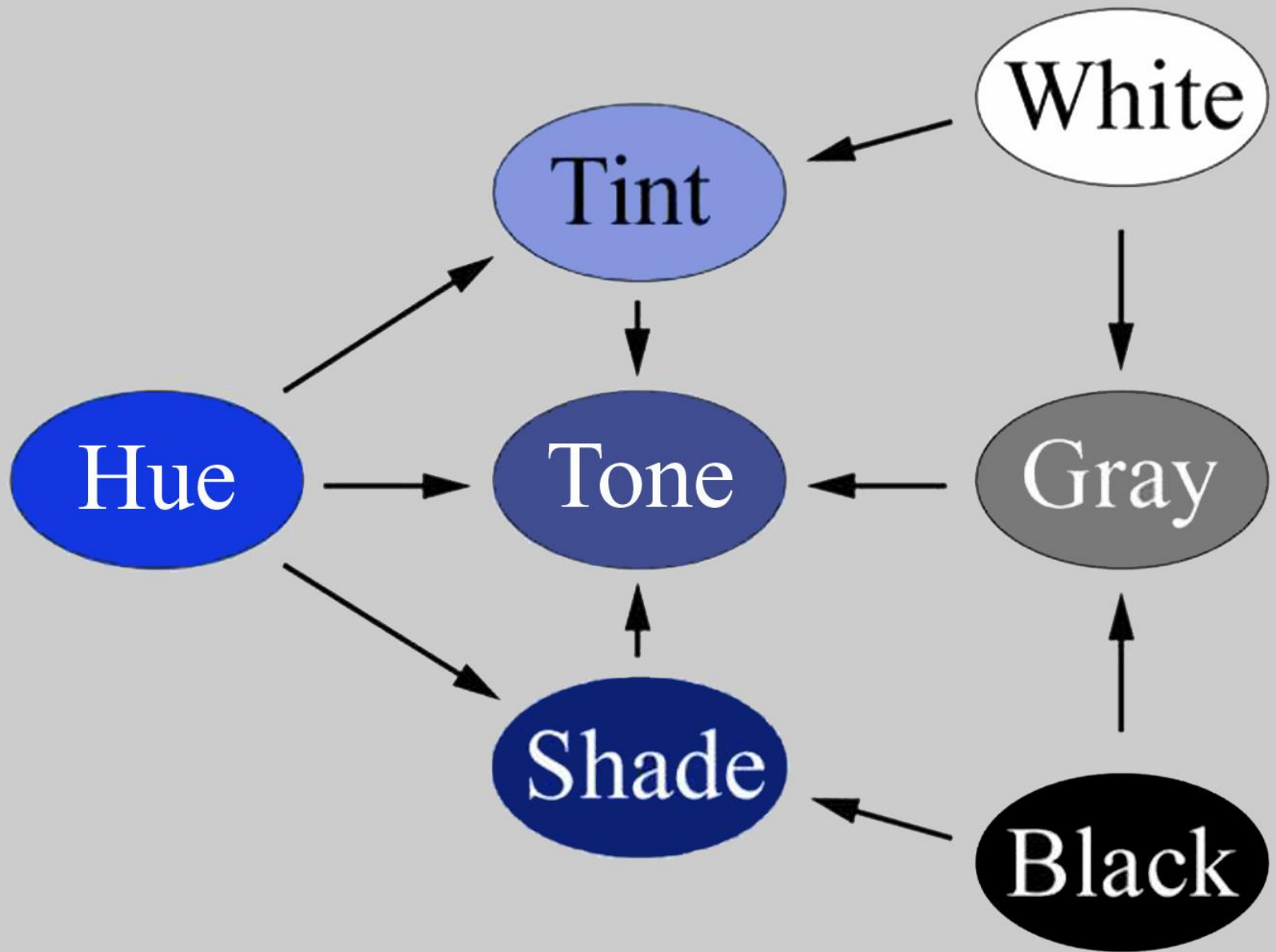
But all tinted,
toned and
shaded colors
are also
neutrals.



Neutral Color Theory

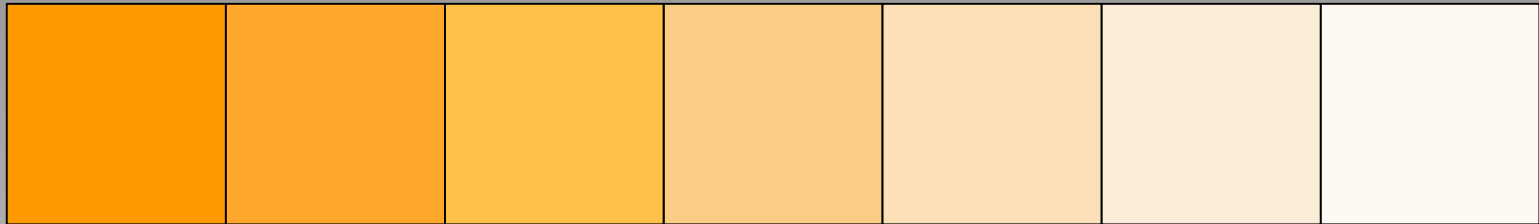
Every color has a shade—a grayed color—in the color spectrum that may become a neutral.





Tints, Tones and Shades of a Color

If white is added to a color it is a **tint**.



If gray is added the result is a **tone**.



If black is added it becomes a **shade**.



Bainbridge Neutrals Specifier Card

Neutrals Specifier for
Shades of Gray 2018.

It featured 62 neutrals
broken into red, yellow,
blue families categorizing
the tints, tones and shades
of each.

A color dot could be
applied to mat corner
sample for easy reference
when designing.

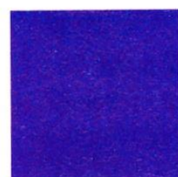


A

quinacridone
magenta



cadmium red



ultramarine
blue



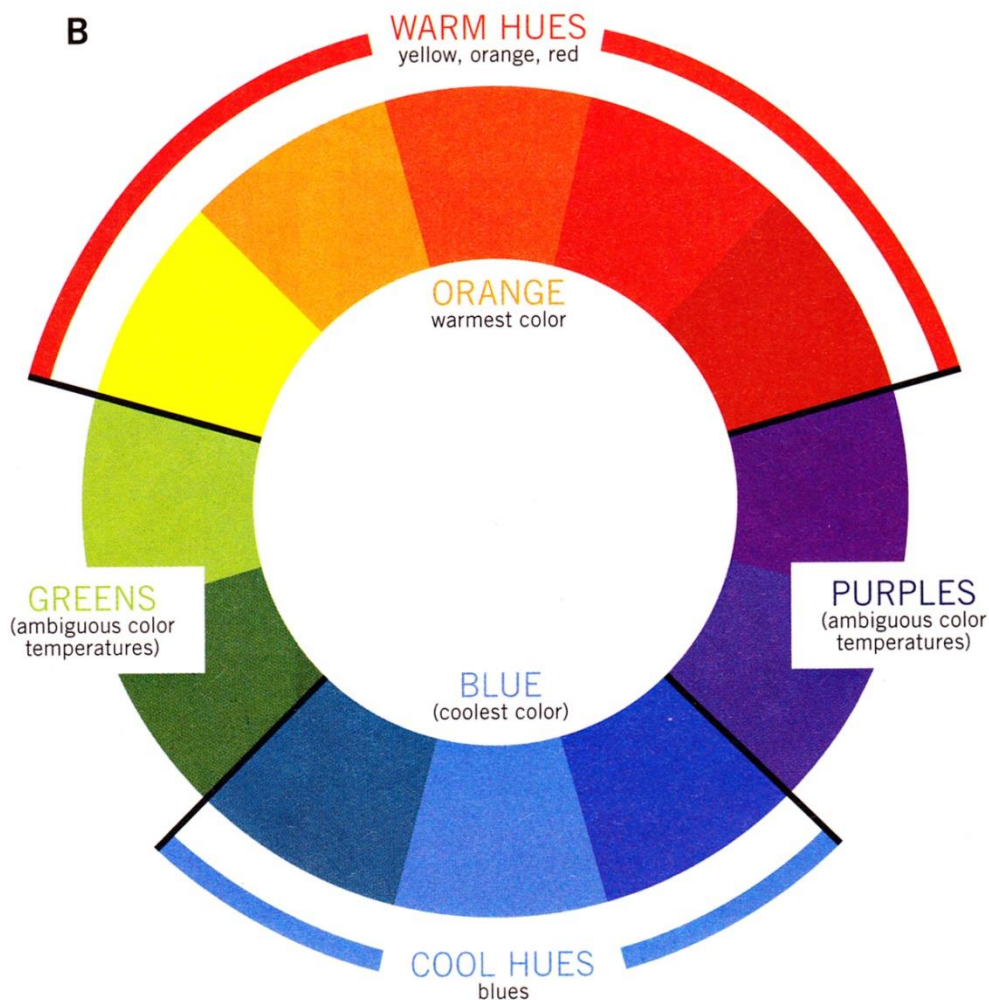
cobalt blue

A: Relative Versus Overall

Temperatures: A red pigment that has overtones of blue, such as quinacridone magenta, may be referred to as a cool red. Cadmium red, with its overtones of yellow, is considered a warm red. Despite these distinctions, each is a red hue and conveys an overall warm color temperature. Blues also have overtones of other colors. Ultramarine blue, with its hint of red, appears warmer than cobalt blue; nonetheless, when examining patterns in color temperature, both blues stand for cool colors within a painting.

B: Warm, Cool and Inbetween:

When determining color-temperature patterns, pay particular attention to the blues (cool colors) and the reds, oranges and yellows (warm colors). Purples and greens, though significant for other reasons, play an ambiguous role in temperature patterns.

B

Sherwin-Williams paint samplers



RED-TONED NEUTRALS IN NATURAL HARMONIES

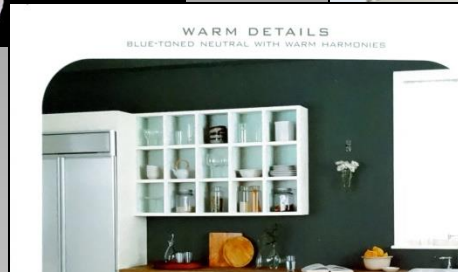
Use neutrals as a complete scheme by themselves, as a simple background for stronger colors, or to help define design features like doorways and windows. Ranging from a whisper of beige to deep, russet browns, these Red-Toned Neutrals are comfortable and traditional.

Our Color Studio has created three distinctive Red-Toned Neutral palettes, each with trim and accent colors:

WARM DETAILS provides warm harmonies that are specifically selected to accent a Red-Toned Neutral. This palette gives a subtle and sophisticated look.

SUBTLE BLENDS gives you lighter and darker tones of a Red-Toned Neutral. It's a classic palette that's simple to work with and comfortable to live with.

COOL DETAILS offers cooler harmonies that will complement a Red-Toned Neutral, to give you quiet accents and interesting highlights.



BLUE-TONED NEUTRALS IN NATURAL HARMONIES

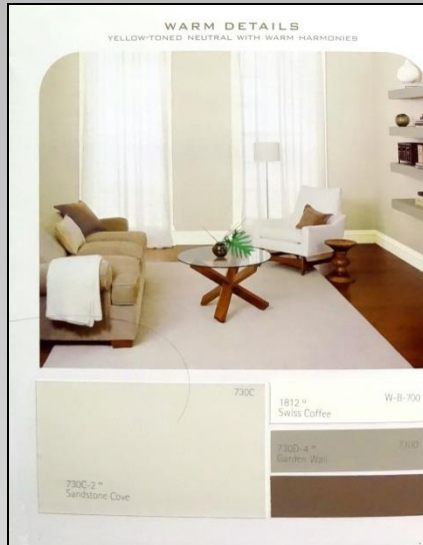
Neutrals are every color's friend, and offer an abundance of shades and nuances. Use neutrals to calm a colorful scheme, or use color to enliven a neutral scheme. Ranging from a hint of gray to smart charcoals to deep blue-blacks, these Blue-Toned Neutrals offer quiet, restrained elegance.

Our Color Studio has created three distinctive Blue-Toned Neutral palettes, each with trim and accent colors:

WARM DETAILS provides warm harmonies that are specifically selected to accent a Blue-Toned Neutral. This palette gives a subtle and sophisticated look.

SUBTLE BLENDS gives you lighter and darker tones of a Blue-Toned Neutral. It's a classic palette that's simple to work with and comfortable to live with.

COOL DETAILS offers cooler harmonies that will complement a Blue-Toned Neutral, to give you quiet accents and interesting highlights.



YELLOW-TONED NEUTRALS IN NATURAL HARMONIES

Think of all the neutrals as very low intensity hues that will work well with all other colors. Experiment freely with different shades and tones and you will be amply rewarded. Ranging from subtle creams to deep golden browns, these Yellow-Toned Neutrals are fresh and quietly uplifting.

Our Color Studio has created three distinctive Yellow-Toned Neutral palettes, each with trim and accent colors:

WARM DETAILS provides warm harmonies that are specifically selected to accent a Yellow-Toned Neutral. This palette gives a subtle and sophisticated look.

SUBTLE BLENDS gives you lighter and darker tones of a Yellow-Toned Neutral. It's a classic palette that's simple to work with and comfortable to live with.

COOL DETAILS offers cooler harmonies that will complement a Yellow-Toned Neutral, to give you quiet accents and interesting highlights.



Color Based Neutral Tints, Tones, Shades

blue

yellow
to green

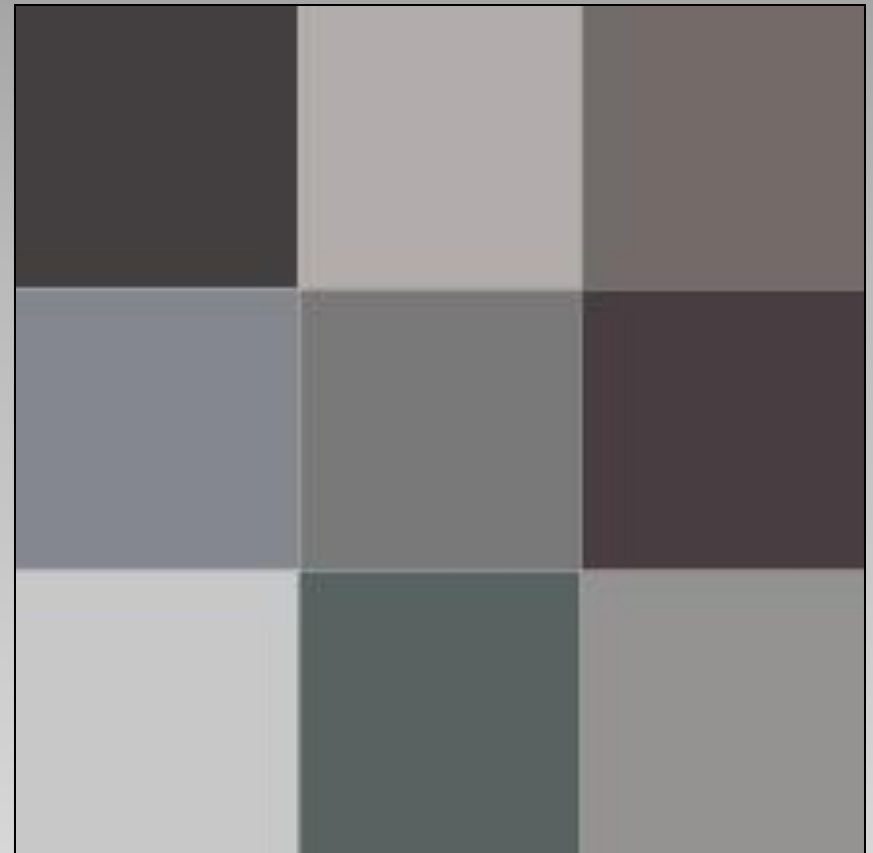
red



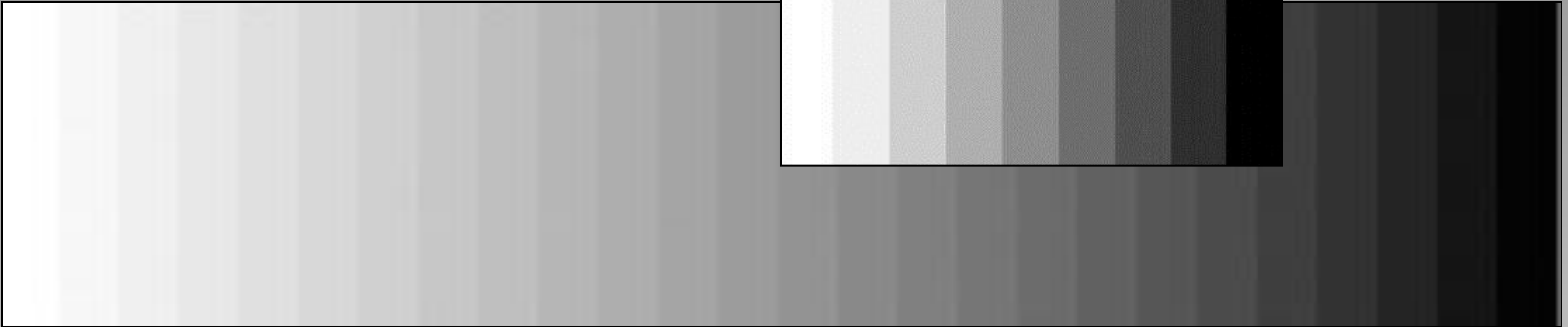
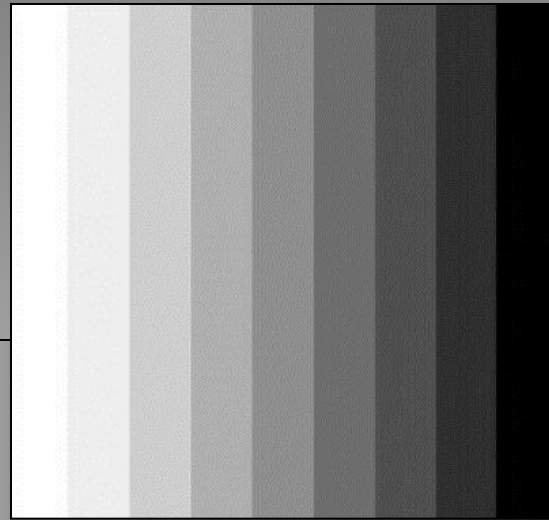
blue

yellow
to green

red



Gray Scale



A monochromatic palette is fine, but introducing a color or accent will control the eye and complete the picture



Cool neutral grays everywhere featuring gray on gray carpet and screen, tinted gray walls and headboard.

Accents of white, crystal, gold and a pop of red and its complement green complete the look.

Not unlike the top mat being gray, with liner mats of darker gray and red.



Cool grays, warm white and a pop of bright yellow.
Like a triple mat of Antique white, middle gray and 1/8" liner of yellow.



Similar palette but a white wall steps down the drama from the previous slide making this a softer look.

The same happens with framing by a lighter top mat.



By adding art and a single accent color among assorted shades of neutral browns and the bedroom pops.

Well placed accents make the visual experience richer, bolder and more interesting.

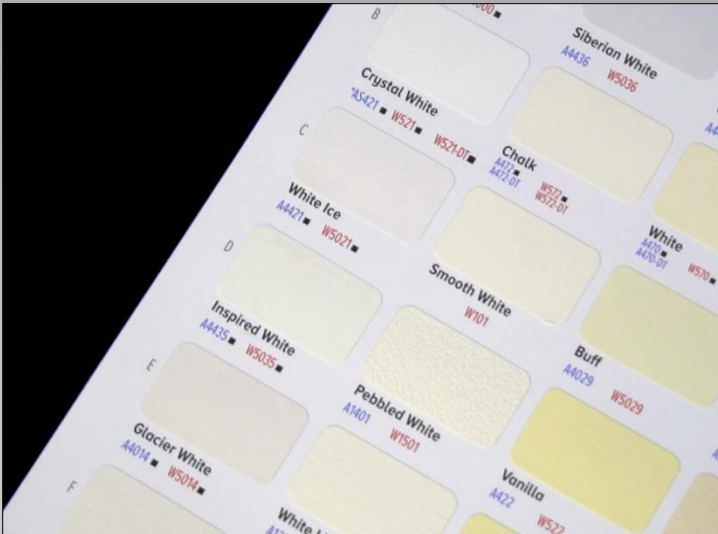




Neutrals in Framing

OPTICAL BRIGHTENING AGENTS

O.B.A



Contains
OBAs

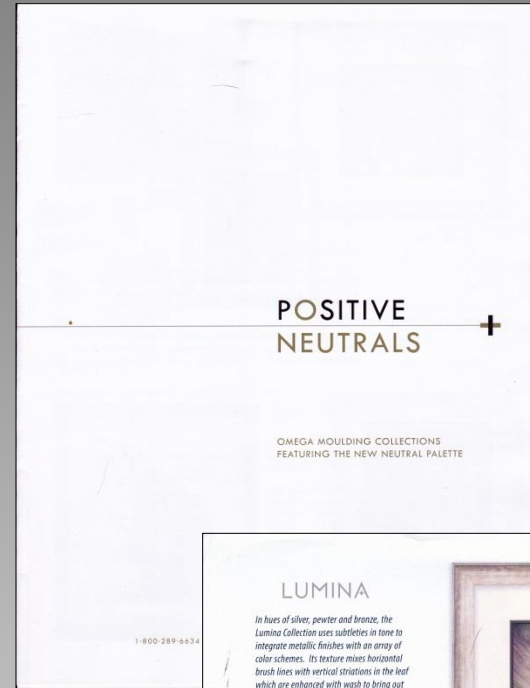
Contains
No OBAs



Optical Brightening Agents - OBAs

<http://www.peterboromatboards.com/videos.php>

Omega Neutrals



Original Chinese Watercolor



Subtle color
contrast, still
neutral

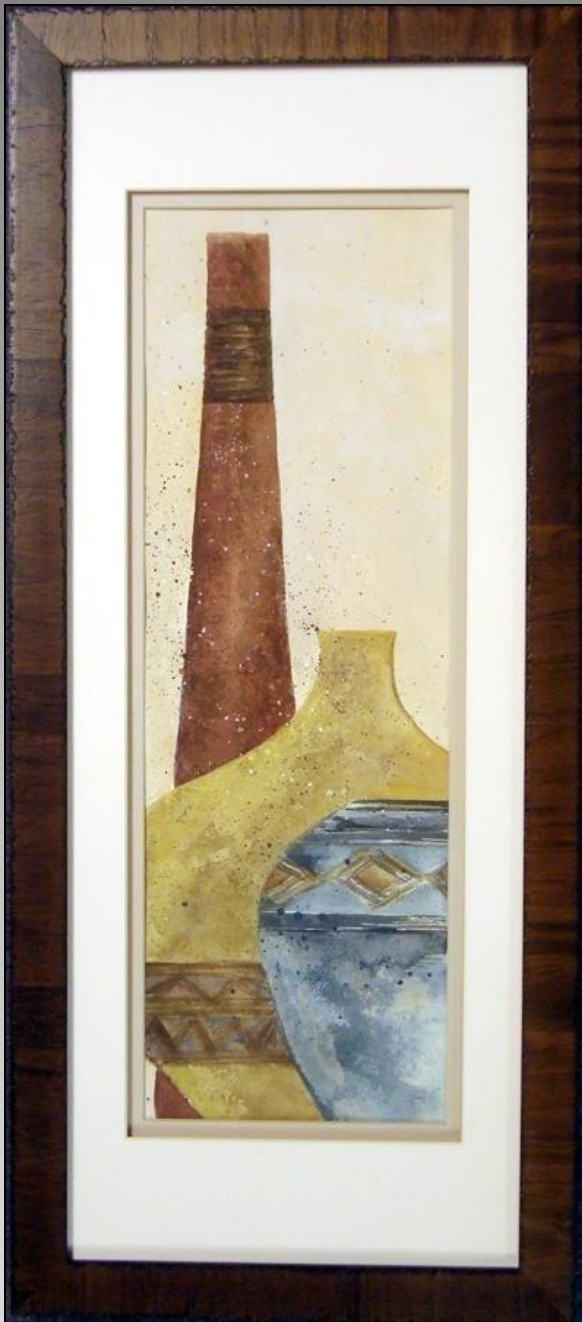
Florence, Italy

LE Etching

Pale blue gray,
warm white and warm
gray triple rag mat
with spacer



Original art – set of 3
Asian proportions elongate
Busy frames demand attention





Warm white expands image.
Spacer adds depth.
Top warm neutral ties
to browns in the horse.



Pearl white rag enlarges image.
Warm gray rag top brings the eye
into the gray of the horse. Dark
frame aligns with the ink.



Shitake silk top mat.
Tan rag second mat.
Gray deep bevel wrap third mat.
Pearl white rag liner mat.



Traditionally framed with team colors, but think outside the box and try neutrals



White as a Neutral

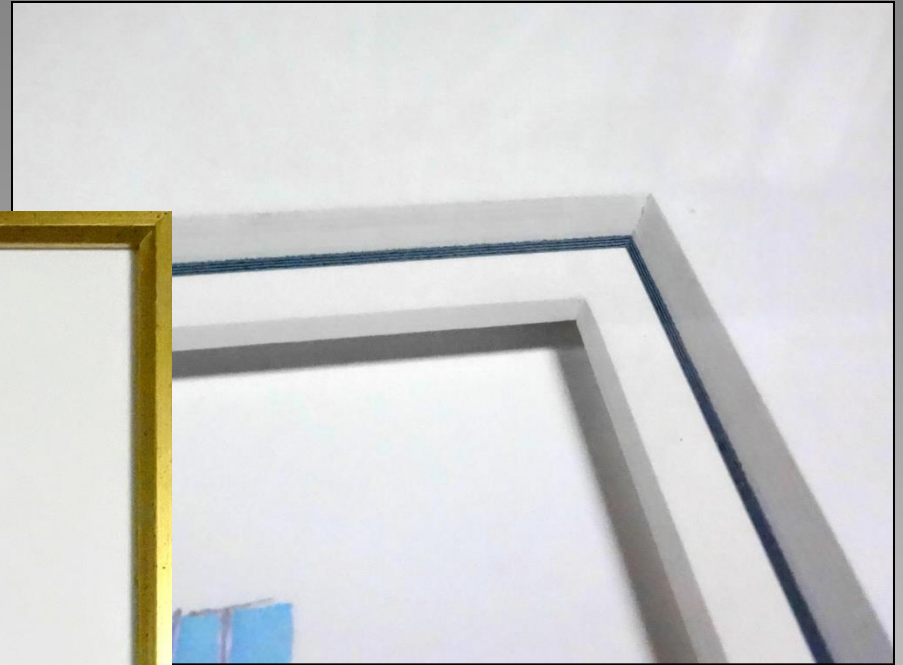
Color enriches and enlivens art, but there is nothing wrong with white on white.

Asian theory states the blank white page is already a completed work of art...so bright white or warm white rag mats can easily enhance fine art.



Creating dimension





LE calligraphy

Under tiered 8-ply
with whit liner,
spacer beneath



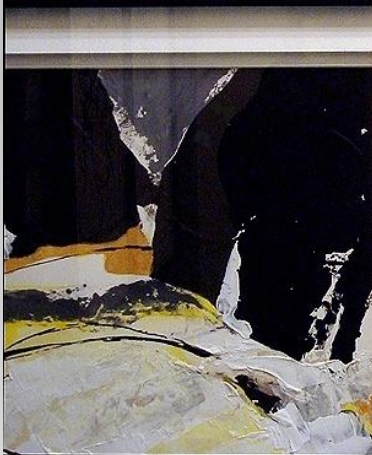
Italian Etching

Three white tints
(crème, white, warm white)
for four mats with spacer.
Top mat is used to break up
the negative space.



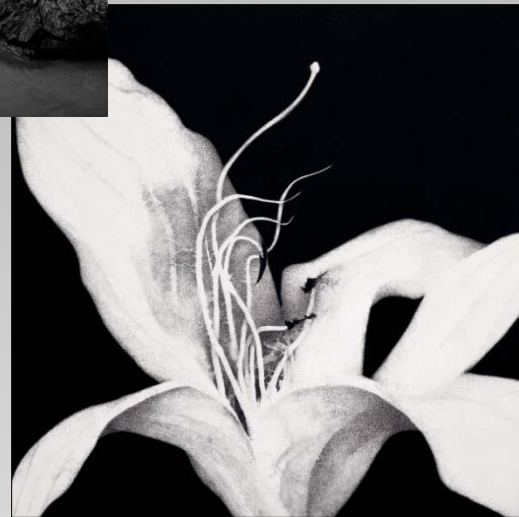
Contemporary

Narrower yet...double rag
white on white mat with spacer
in Nielsen #34-21 metal



Black as a Neutral





Black, gray and white
continues to trend

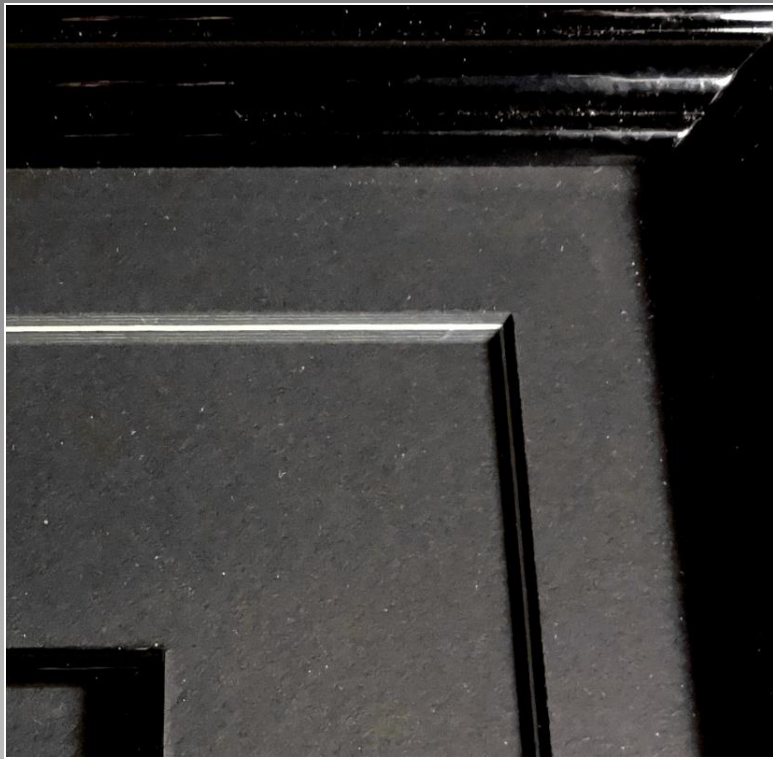


Black & white has been around for a very long time and remains the classical blend no matter how color trends vary.





Area rugs atop wall-to-wall with
animal rug accent.

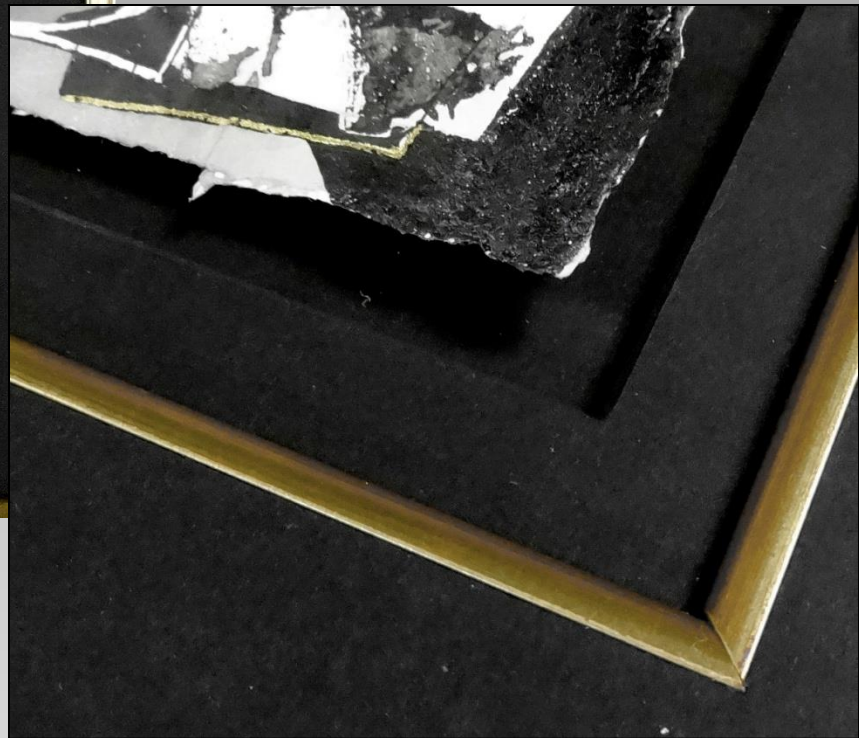


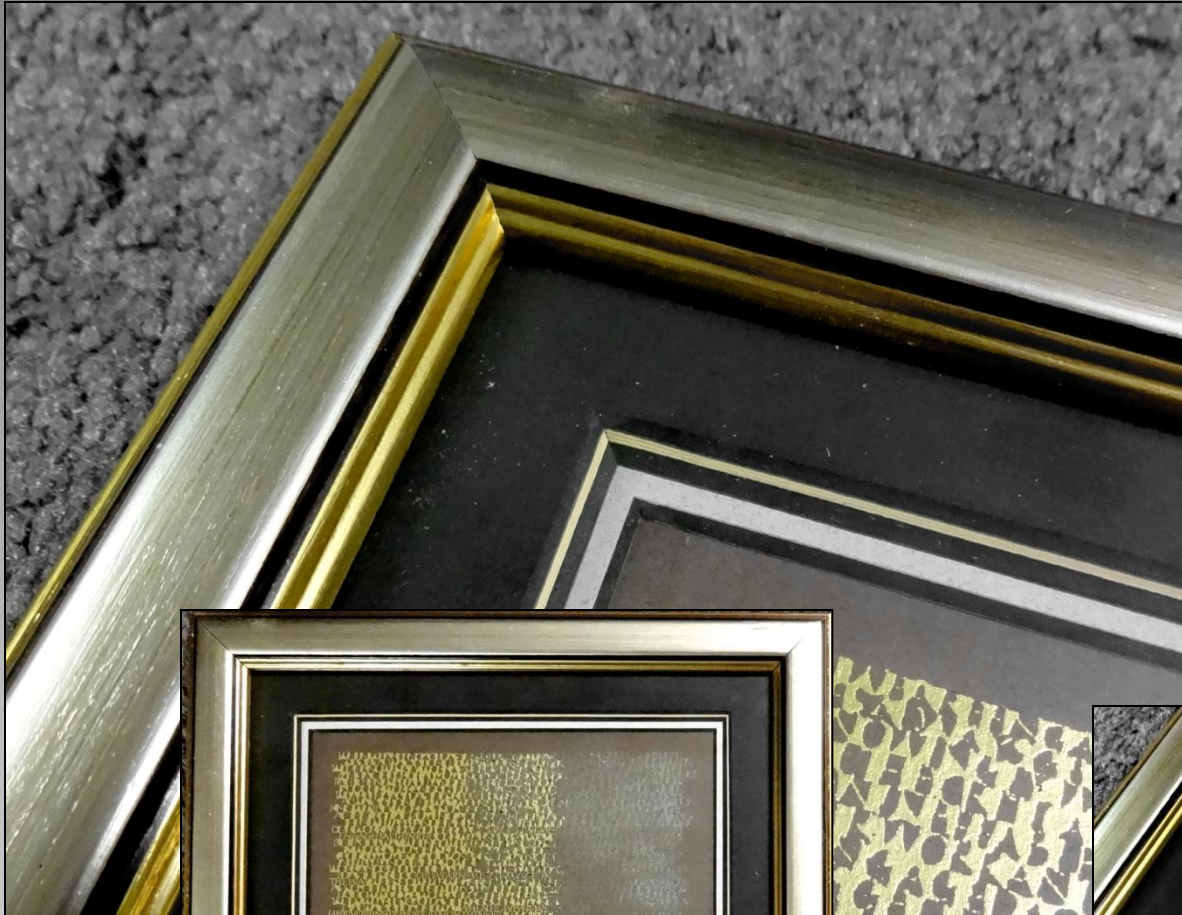
Eyvind Earle
High Gloss Serigraph
triple mat with fillet and
8-ply pin stripe at top



Original Gilded Calligraphy

floated art
black on black on black
with gold fillet





Metallics

Gold & silver
are also considered
neutrals

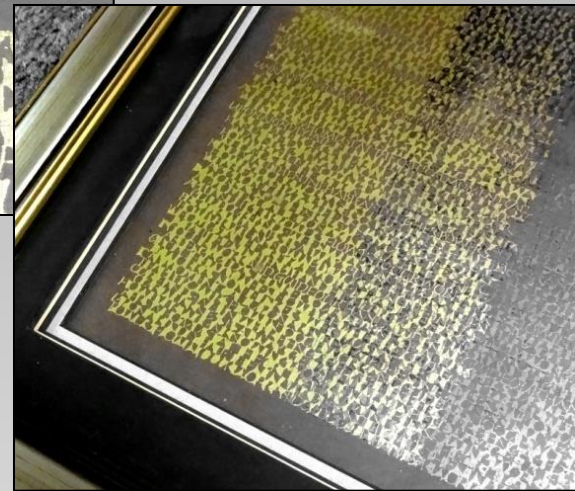




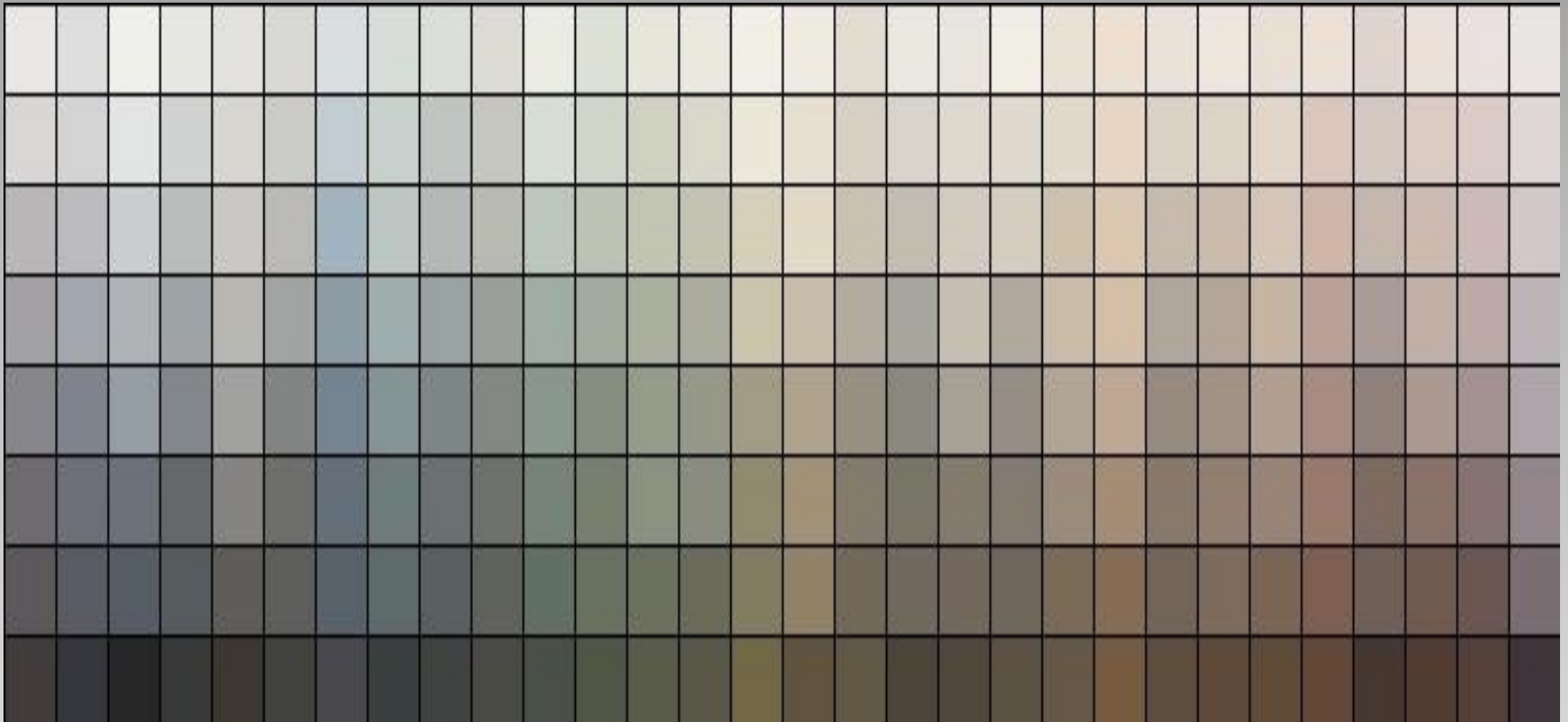
Photo
double rag mat
with spacer
photo mounted by
customer



Neutral Monochromatic Palettes

What's a Neutral?

Every color on the color wheel has a tint and shade in the color spectrum that is a neutral.



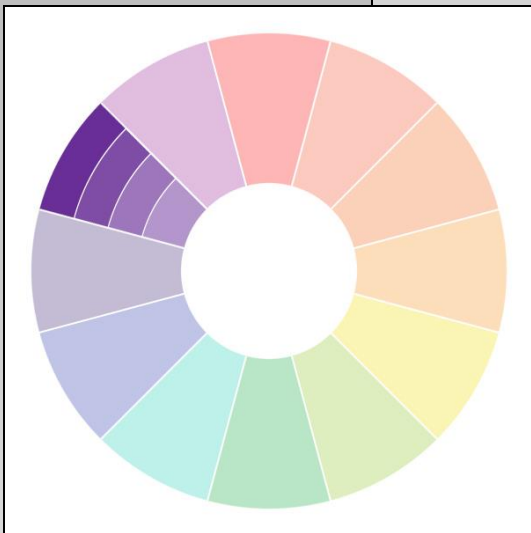
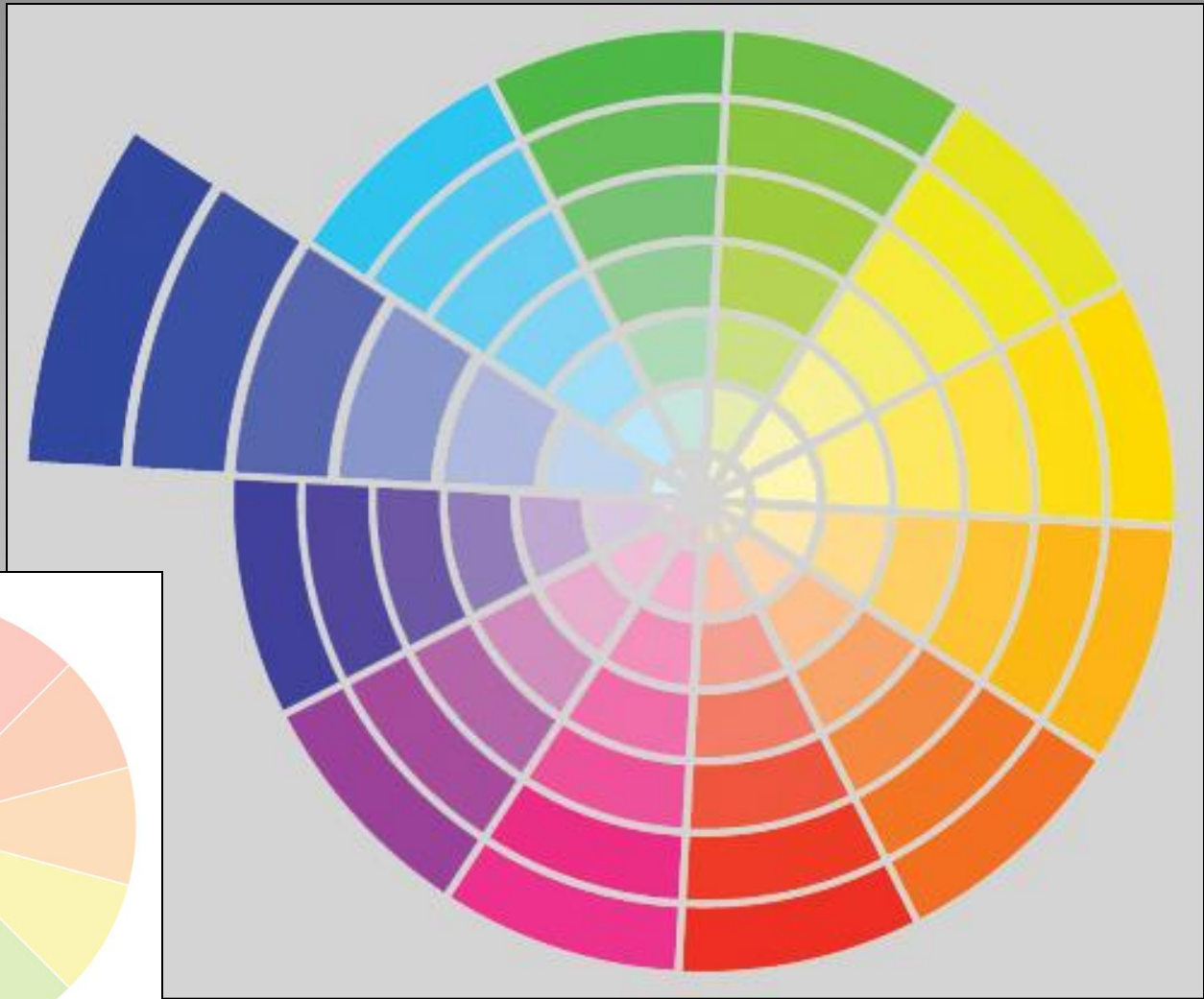
Pastel Tints &
Soothing Neutrals



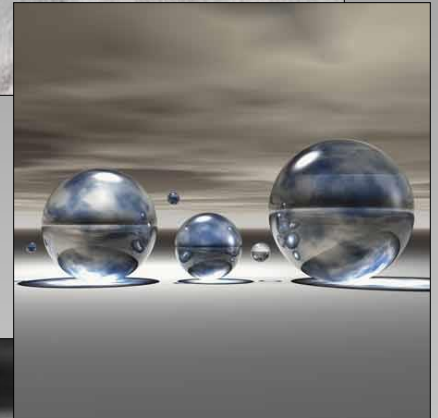
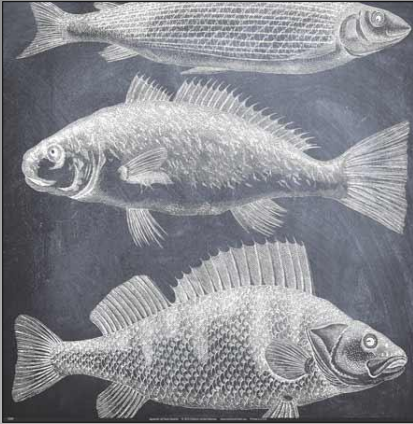
Grayed Tones and Tints



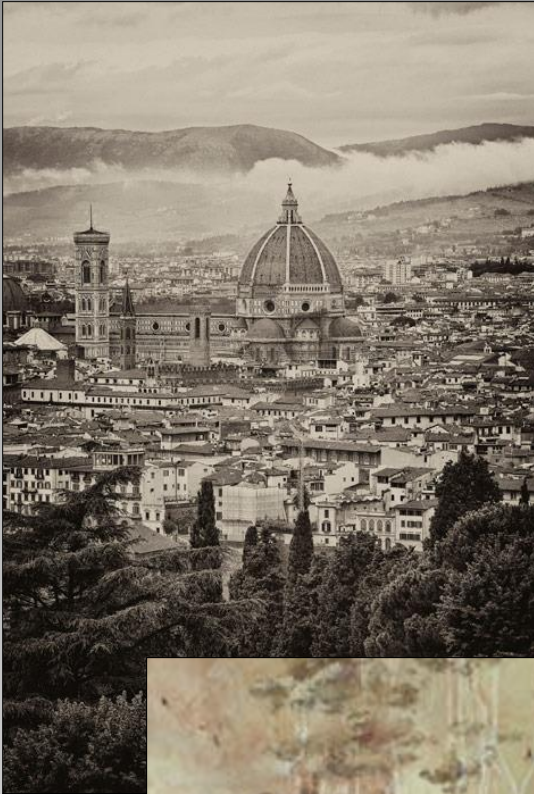
Monochromatic Palette



Gray Monochrome



Brown Monochrome





When asking room colors and patterns think about contrast

Neutral Emphasis

Visual emphasis
using neutral color...
it's all about the drama





Same concept, color and spacer using different proportions and metal mouldings results in different visual impact.



Pay attention to rabbet sight lines when deciding mat widths.

Triple rag with
decorative paper







Neutral + Texture



Sometimes it's the addition of color...sometimes its the rhythm of pattern.
Warm yellow based gray walls are contrasted with cool gray furniture.
The big color accent is the neutral brown patterned flooring.

Moorman suede and black
blackcore with spacer
on digital photograph



Original Calligraphy

Triple rag mat rouge and
tan (top and liner) with spacer
Frame picks up letter texture.







Pastel Print

Antique white double rag
mat with wide inner reveal
and deep bevel wrap



Colors of the Year 2019

Benjamin Moore - Metropolitan

Color Trends 2019 range from neutrals to rich blues and greens, that all complement Metropolitan.



Dunn Edwards - *Spice of Life*



“A dark, browned, fire brick red with orange undertones is an outgoing, confident hue that adds drama and stimulates the senses.”

Sherwin Williams - Cavern Clay

“We believe 2019 will be a renaissance of the 1970s—with a twist, embodying renewal, simplicity and free-spirited, bohemian flair”



Like a warm desert breeze this terra cotta and umber tone captures the essence of mid-century charm.

Behr - Blueprint

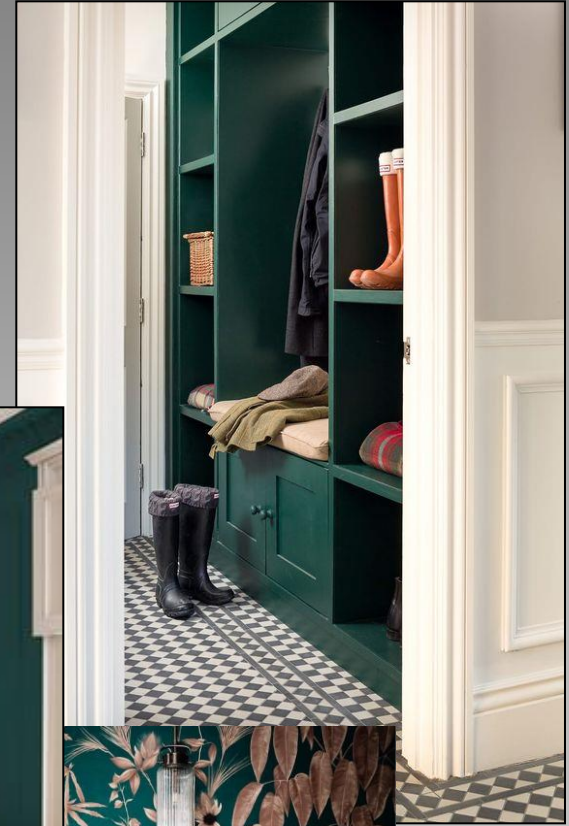
A relaxed versatile hue for walls, ceilings, furniture, and cabinets. A timeless color offering tranquility, comfort and creativity.



PPG Paint – Night Watch



A black infused green used as a neutral or accent, feels healthy, grounded and calm, bringing healing power from the outdoors in.



Pantone 2019 - Living Coral



A year of warmer, happier, earthy tones, reminiscent of the 70s color palettes. Coral will be paired with green shades or desert tones. Neutrals will still be dominant, but coral will be seen as a contrast color on accessories and woodwork.



Products 2019



Pantone *Living Coral* Palettes

Living Coral may be the color trend setter for the year, but all tints, tones and shades of it will be seen as fashion, home décor and art.



Shimmering Sunset



Sympatico



PANTONE®
19-3940
Blue Depths



PANTONE®
19-4053
Turkish Sea



PANTONE®
17-5126
Viridian Green



PANTONE®
17-0330
Turtle Green



PANTONE®
16-1546
Living Coral



PANTONE®
15-1912
Sea Pink



PANTONE®
13-0858
Vibrant Yellow



PANTONE®
13-4810
Limpet Shell

Under the Sea



PANTONE®
13-0650
Sulphur Spring



PANTONE®
16-1546
Living Coral



PANTONE®
18-3634
Chive Blossom



PANTONE®
19-2045
Vivacious



PANTONE®
17-4530
Barrier Reef



PANTONE®
18-4834
Deep Lake



PANTONE®
17-4245
Ibiza Blue



PANTONE®
16-1735
Pink Lemonade

Trippy



PANTONE®
15-4003
Storm Gray



PANTONE®
19-5230
Forest Biome



PANTONE®
18-0625
Martini Olive



PANTONE®
16-0543
Golden Lime



PANTONE®
17-1522
Mauvewood



PANTONE®
16-1546
Living Coral



PANTONE®
16-1108
Twill



PANTONE®
19-0405
Beluga

Focal Points

Other Paschke classes WCAF 2019

Design Elements: Pop of Color

Tuesday, 10:00am-12:00pm

Mastering Mounting: Creative Mounting

Lecture = Tuesday, 12:30-3:00pm

Workshop = Tuesday, 3:30-6:00pm

Mastering Mounting: Challenging Items

Wednesday, 10:00am-12:00pm

Paschke Online
Article Archive and Reference Library

<http://designsinkart.com/library.htm>

Articles by Subject:
West Coast Art & Frame PowerPoint and PDF



Chris A Paschke, CPF GCF CMG

Designs Ink

Tehachapi, CA

www.DesignsInkArt.com/Library.htm