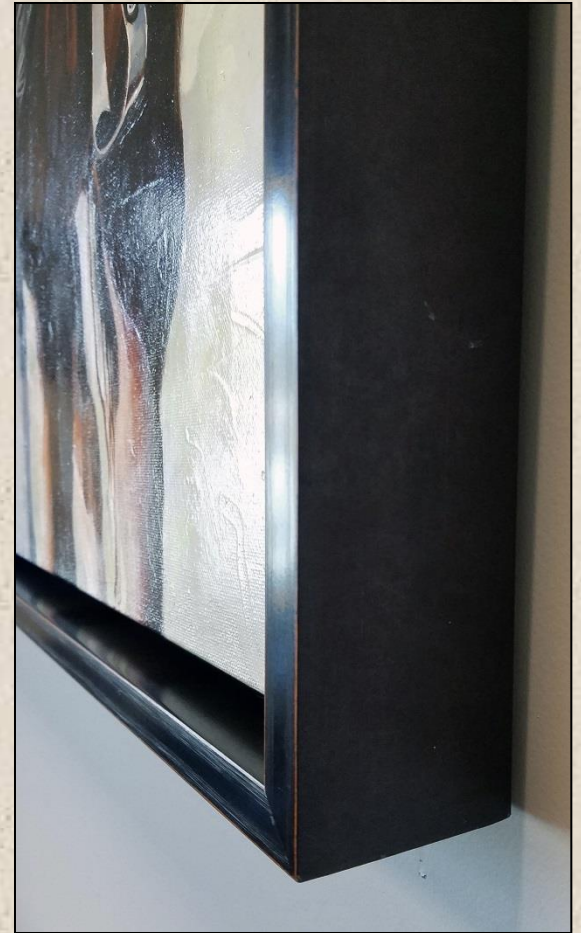


Mastering Mounting: Float Frame Trends & Designs

Chris A. Paschke, CPF GCF



West Coast Art & Frame Expo, Las Vegas 2024

Preservation Issues

Traditional Canvases

Use rag, rabbit liners, sealers, brackets

Contemporary Digitals

Stretched on bars or strainers

Gallery Wraps

Mounted to low temperature MountCor Canvas

Encaustic and Mixed Media

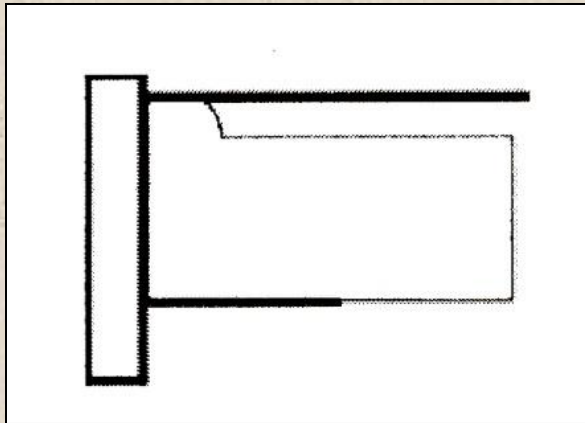
Screwed to frames

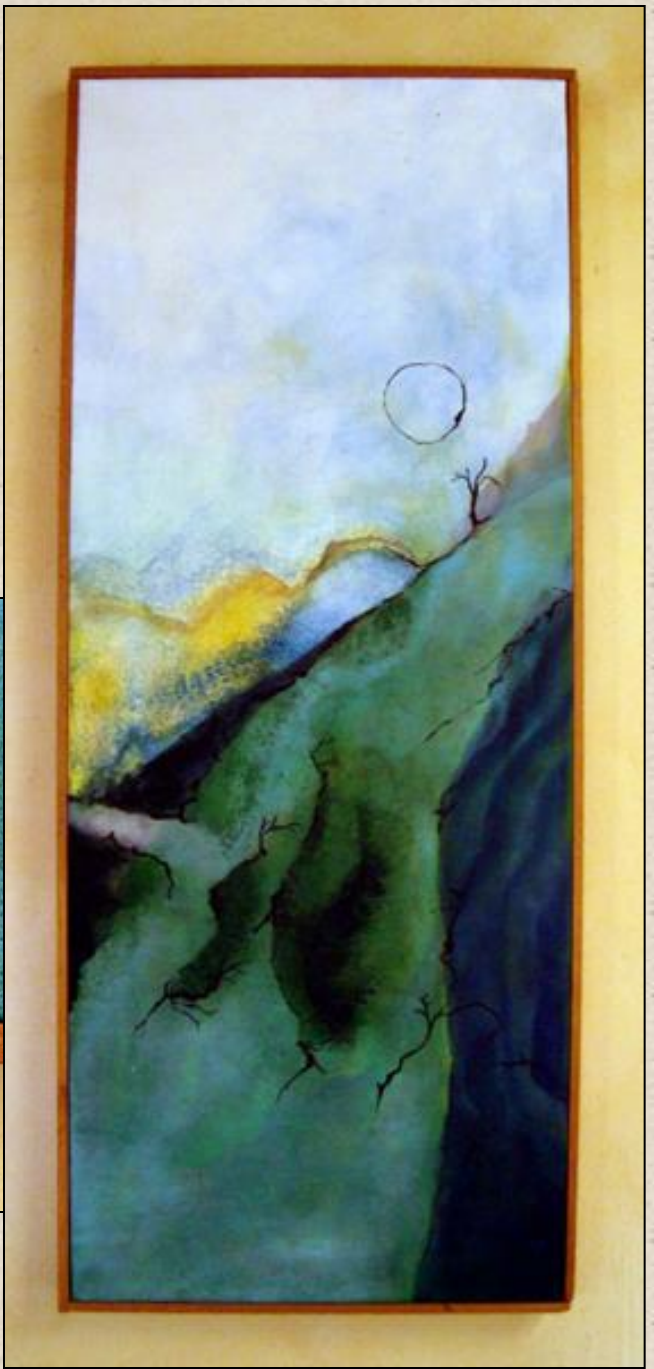
Possibly use Velcro to change out

Float Frame Styles

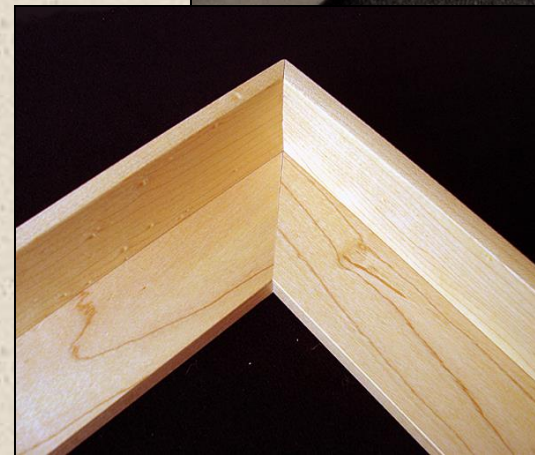
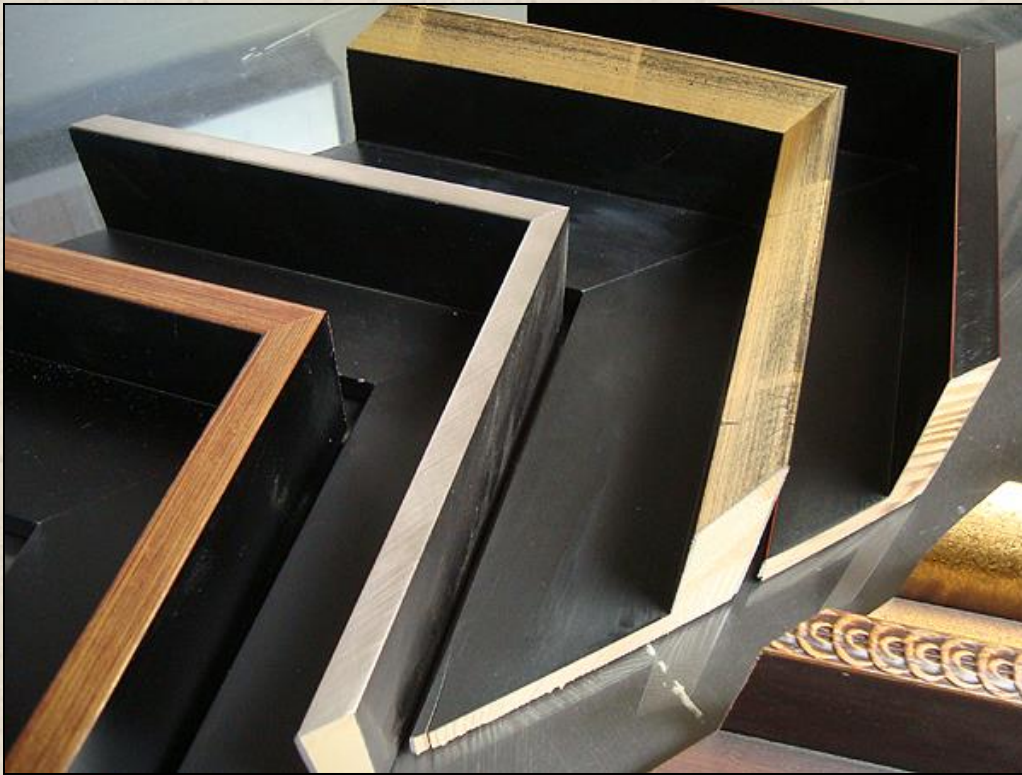
- Baguette Siding
- Standard L-Float
- Faux Float
- Stacked Float
- Contemporary Profiles
- Stepped Float
- Multiple Image Float

Baguette



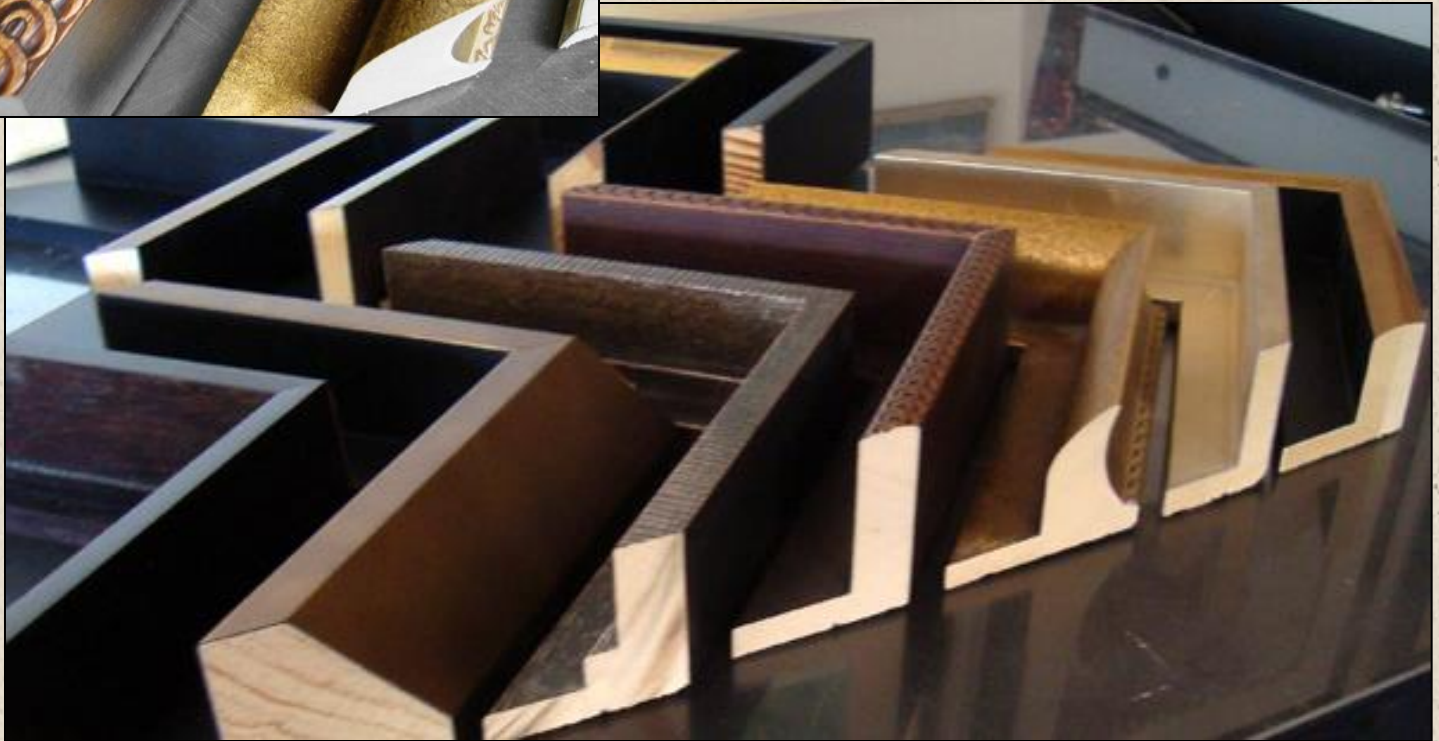


Float Profiles

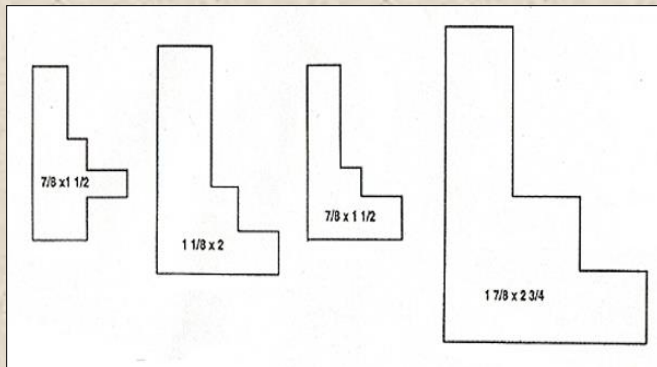


Standard L-Float
Long Base
Short Base

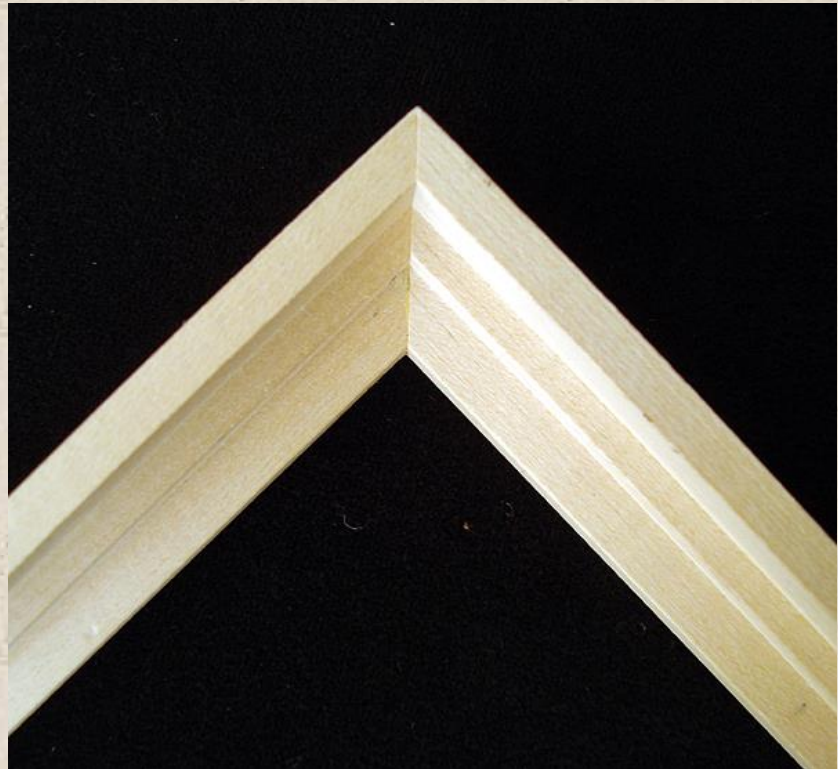
Decorative, Smooth, & Shaped Profiles



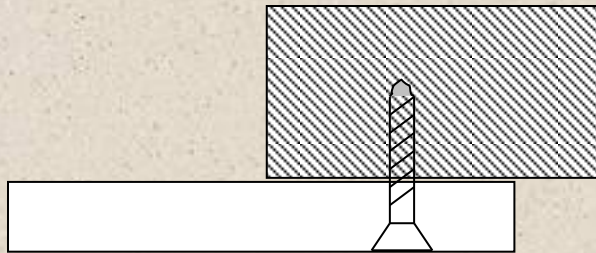
Stepped Float



Stair or
Spacer Style

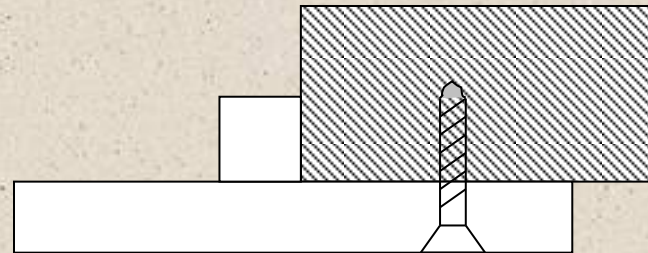


Faux Float



Flat Mount

Strainer as Frame

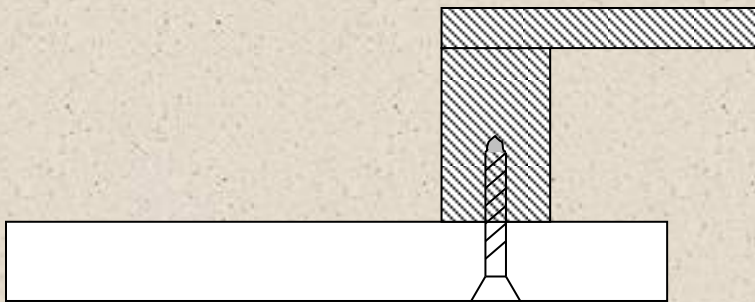


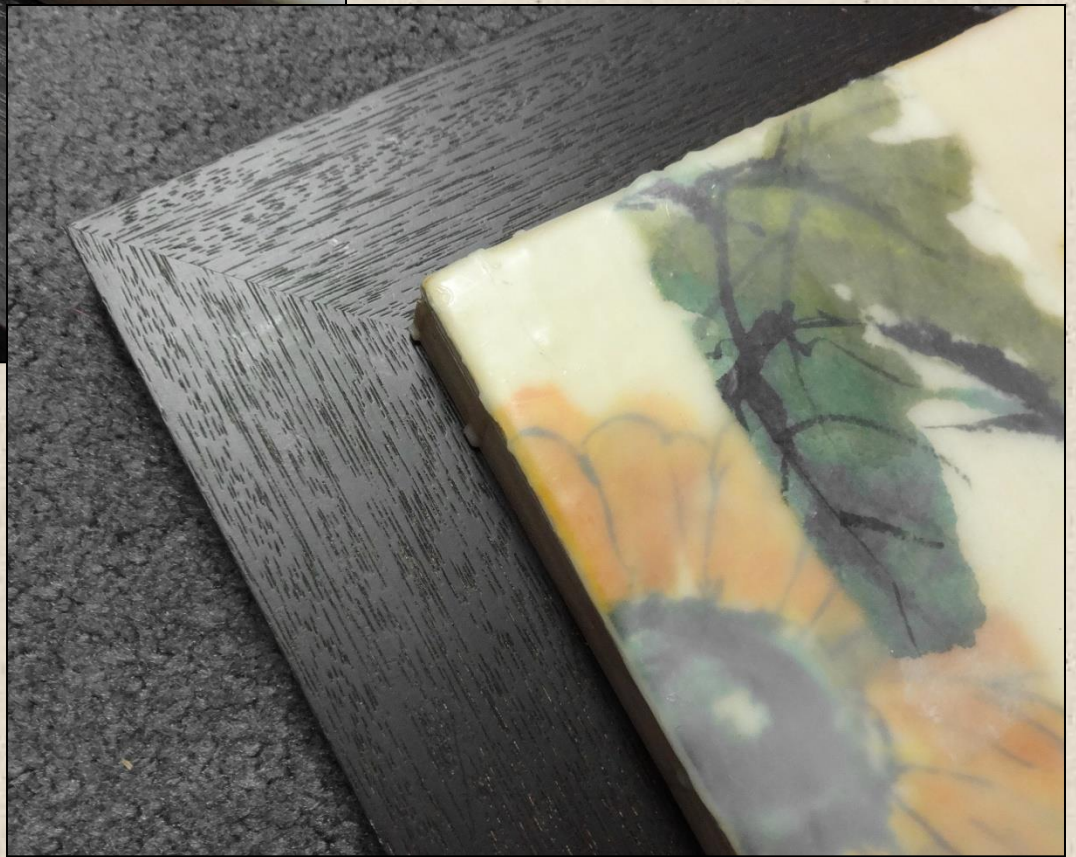
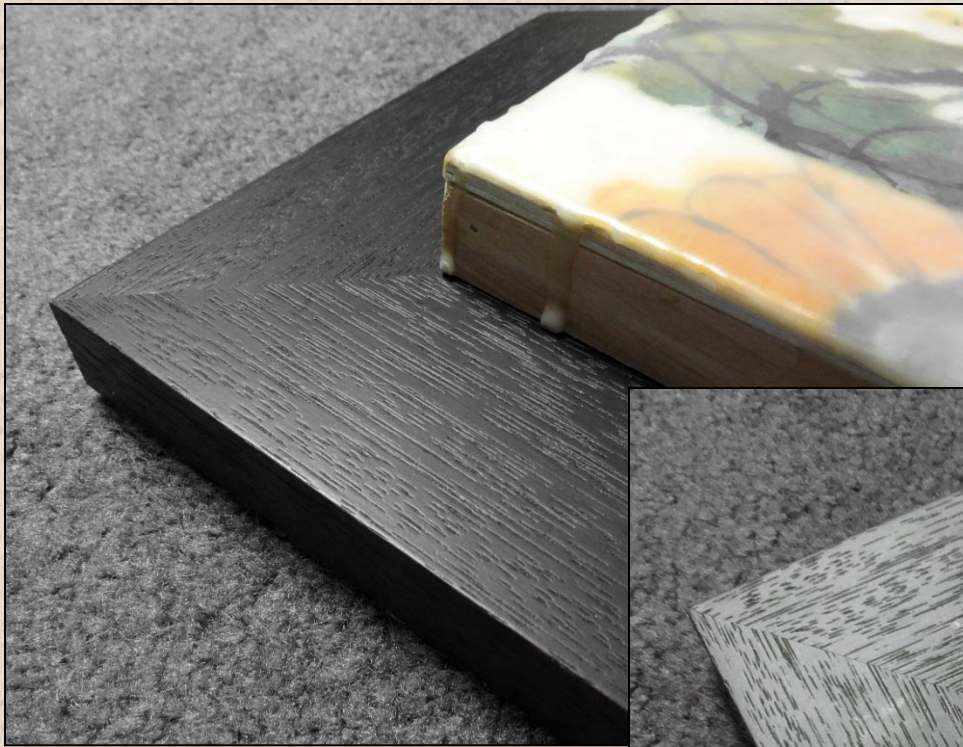
Stacked Mount

Block and Flat as Frame

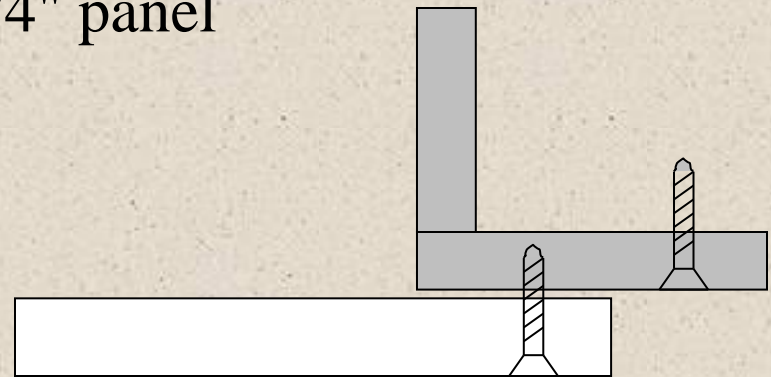
Most recently seen in home décor industry

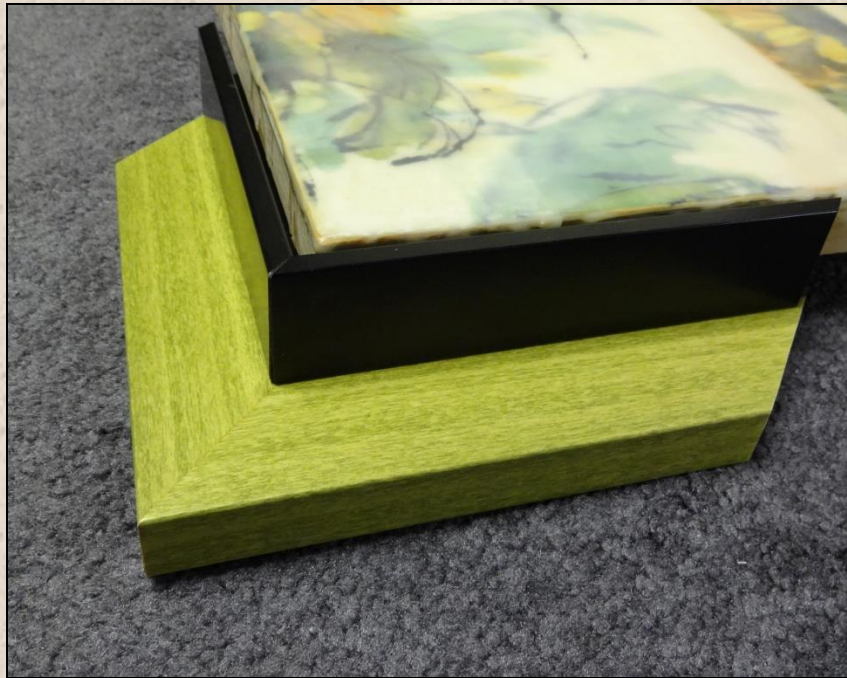
Faux Float with panel and cradle





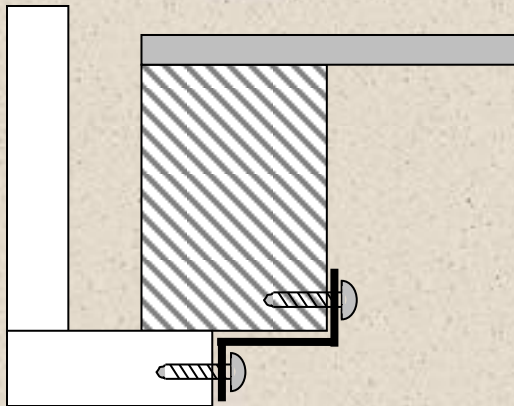
Flat Float with 1/4" panel

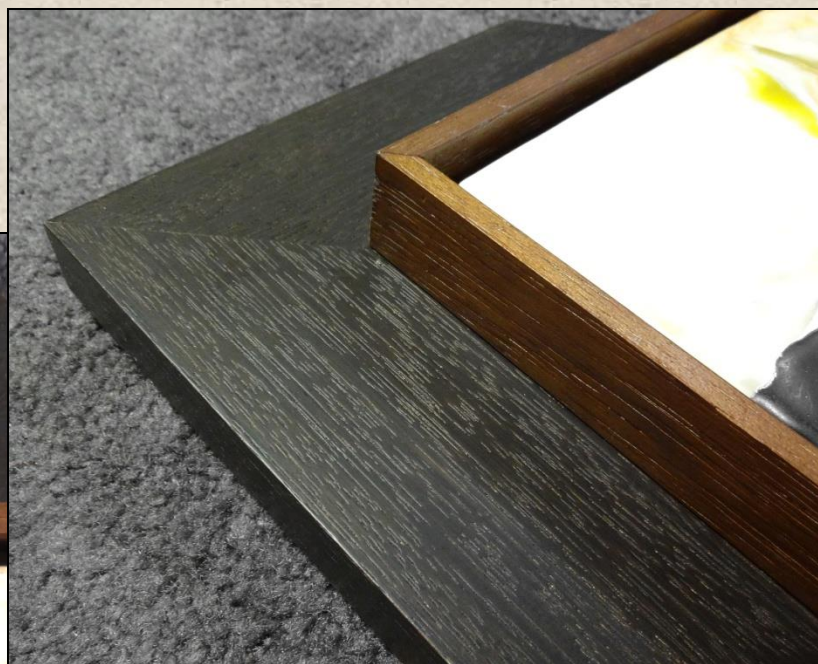
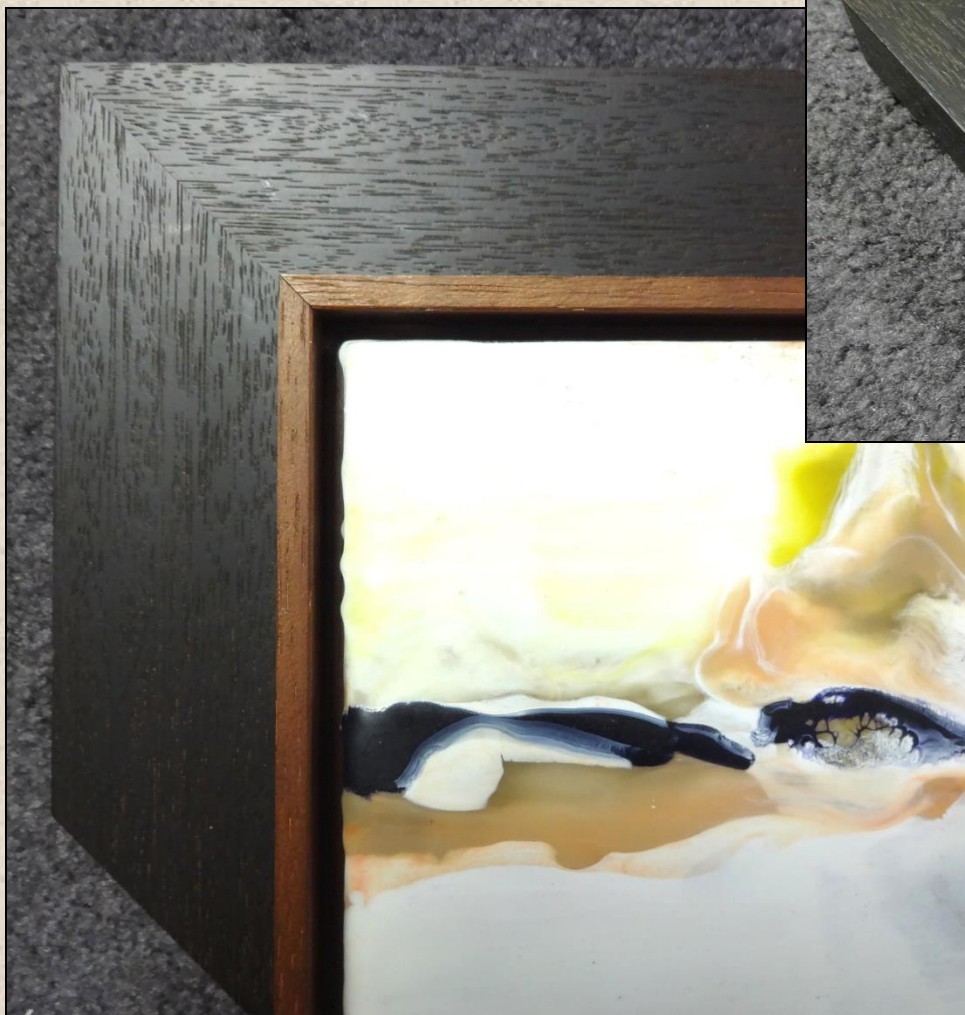




Flat Float with cradle

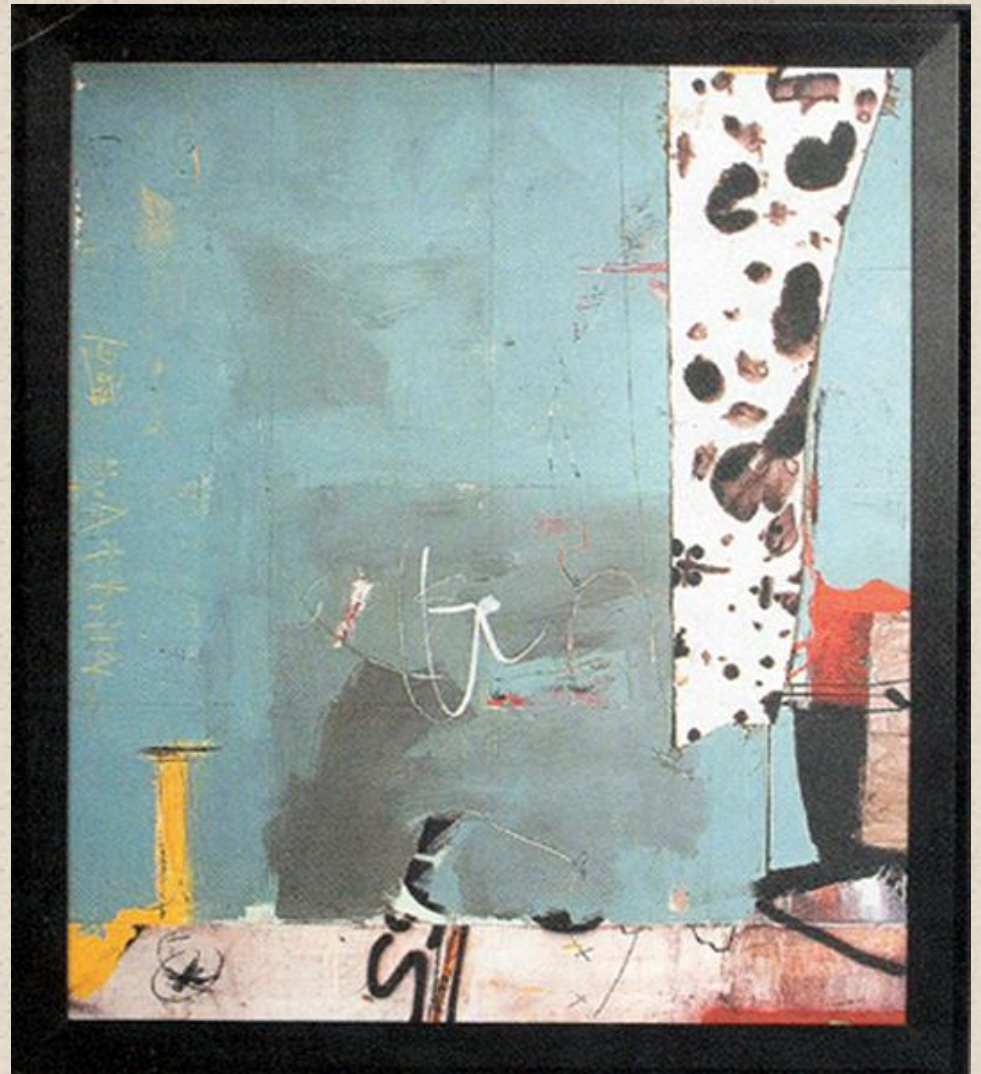
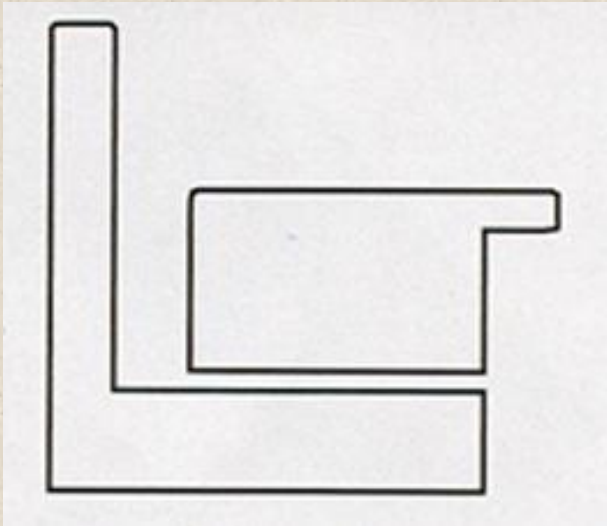
Flat strainer or
solid wood backing
for mounted float frame.





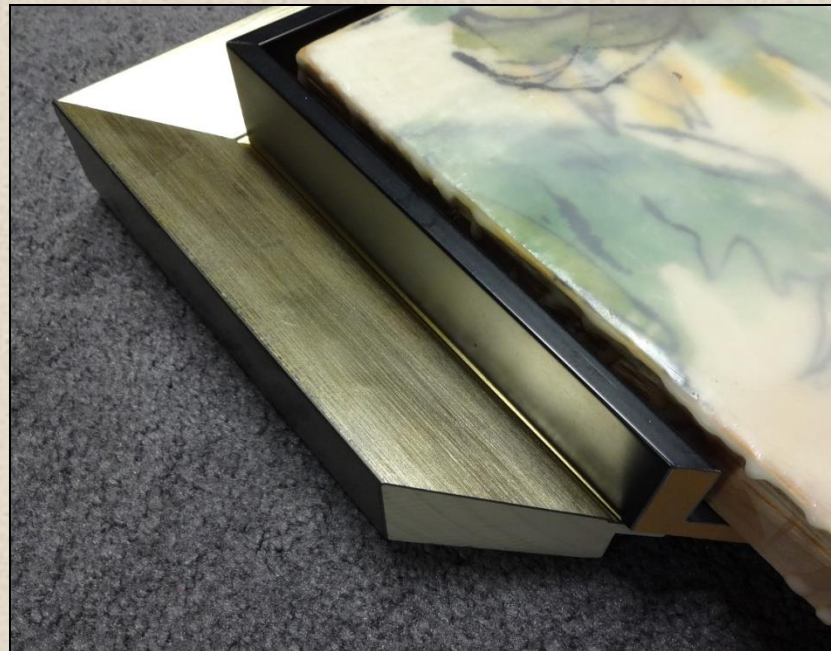
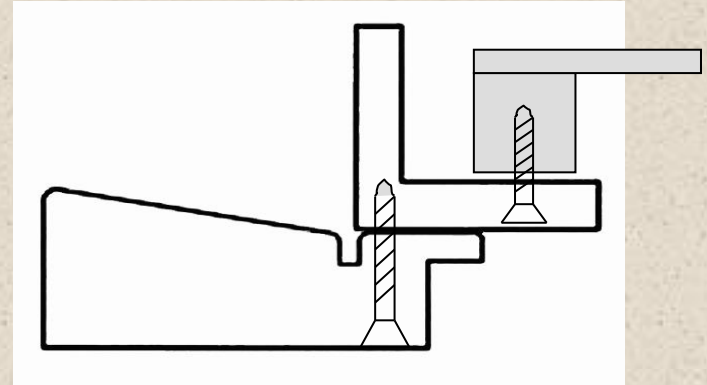
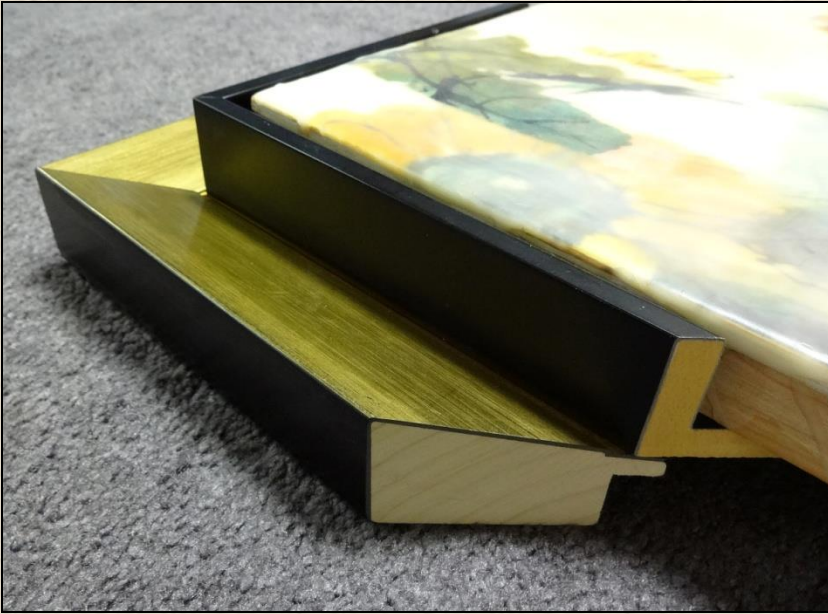
Stacked Float

Floater w/matching
rabbet moulding



Greg Perkins/Larson-Juhl

Stacked Float

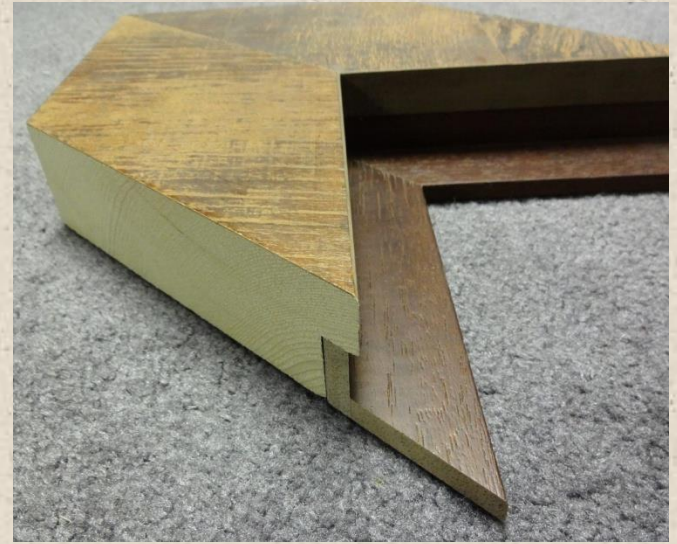




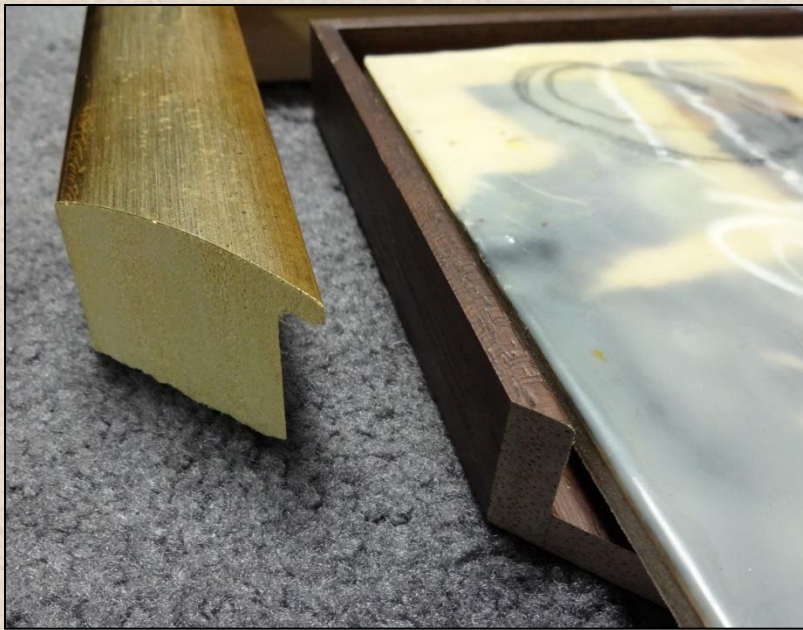
Capped Stack

Narrow & wide cap
w/matching
float liner





Extra wide cap
w/matching float liner



Metallic cap w/wood
tone float liner

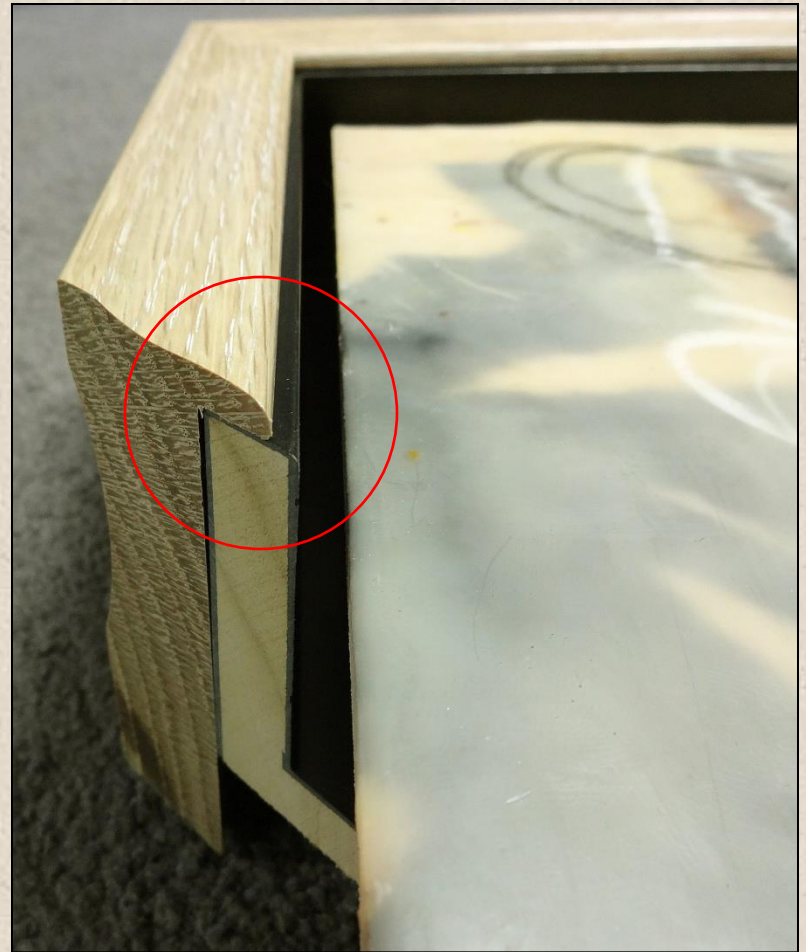
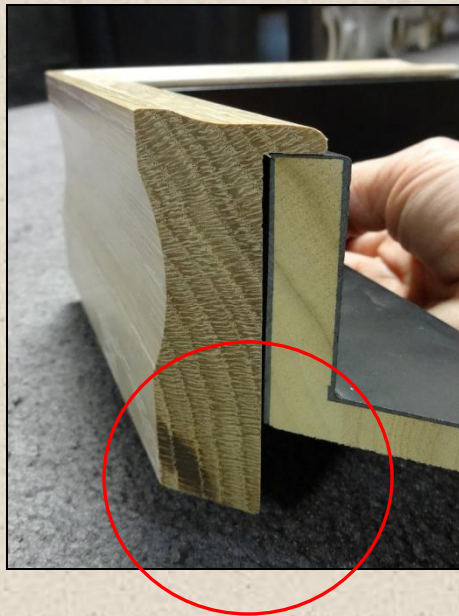
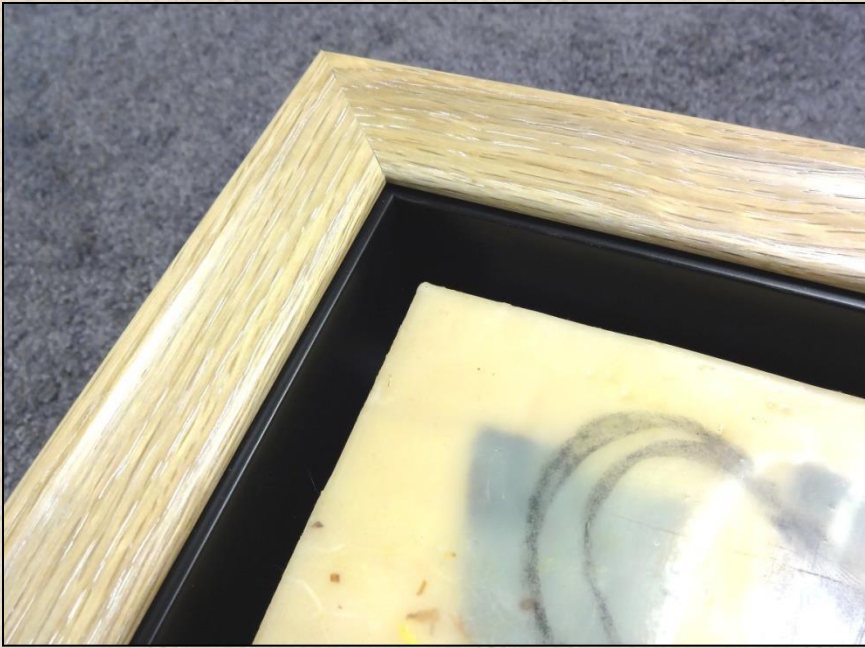


Decorative Float

Cap w/contrasting
float liner



Depth and Rabbet



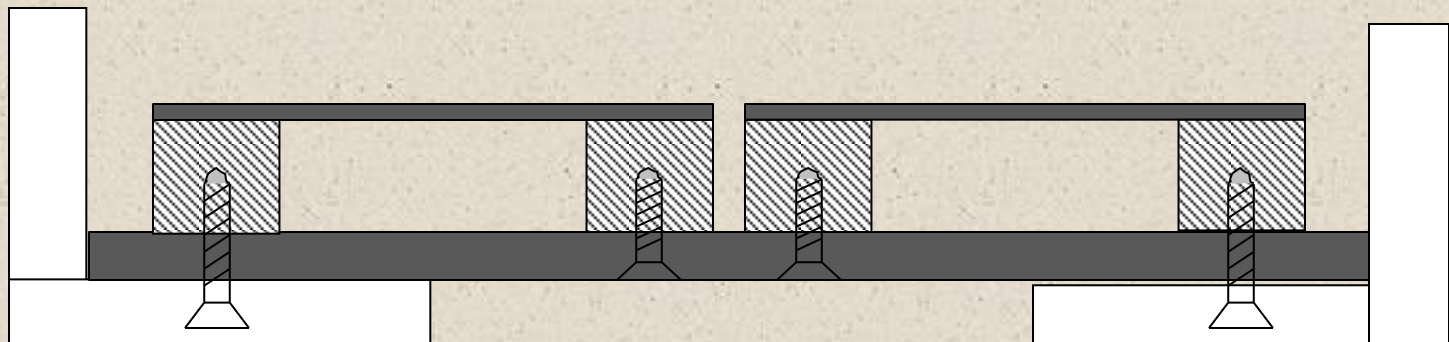


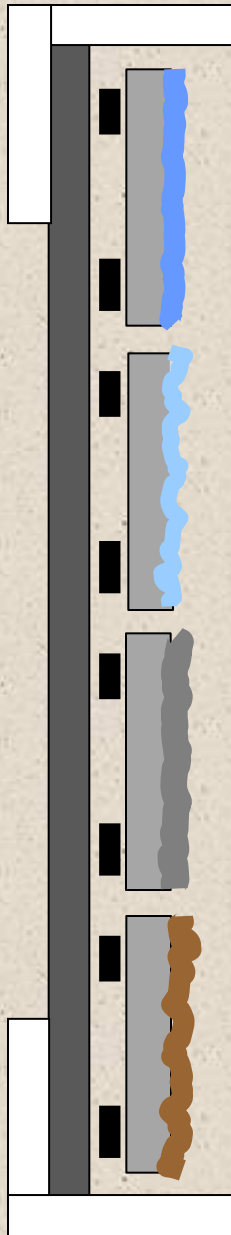
Diptych
in single float frame

Diptych Float

one frame

Cradle or
Stretched canvas





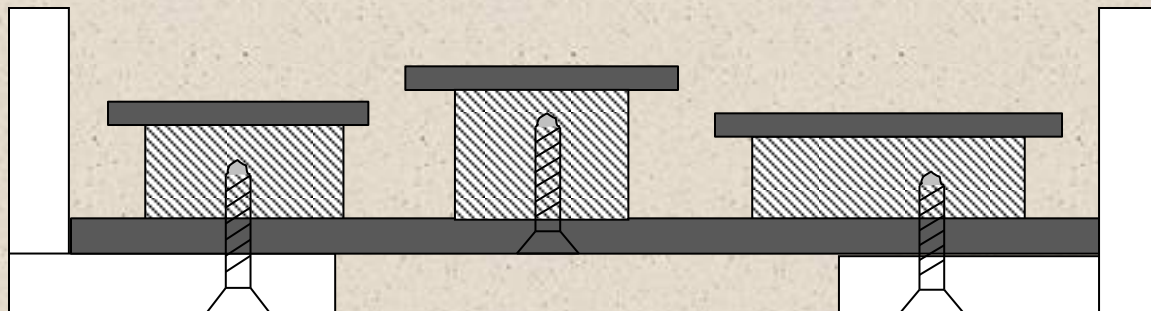
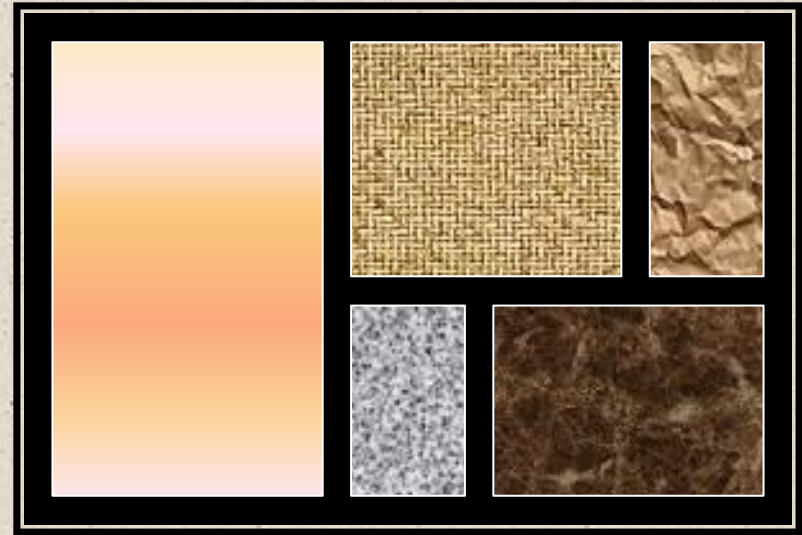
Multiple Image Float

Vertical
Horizontal
or Nine Up

Removable Velcro
attachment on
black rigid support

Black Gatorboard
Black Hexacomb

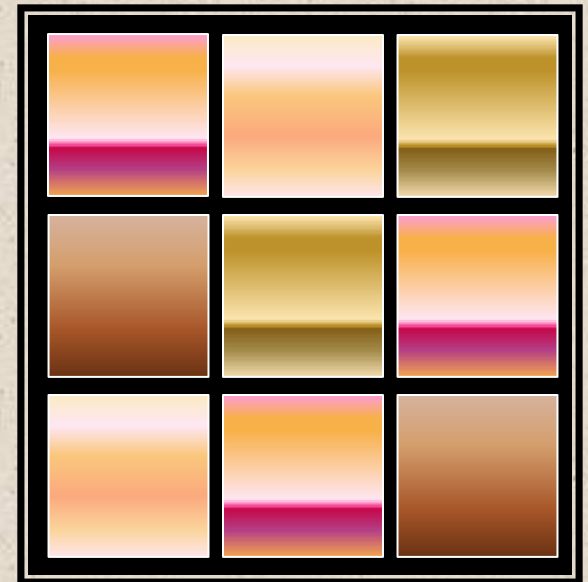
Multiple Float on hardboard





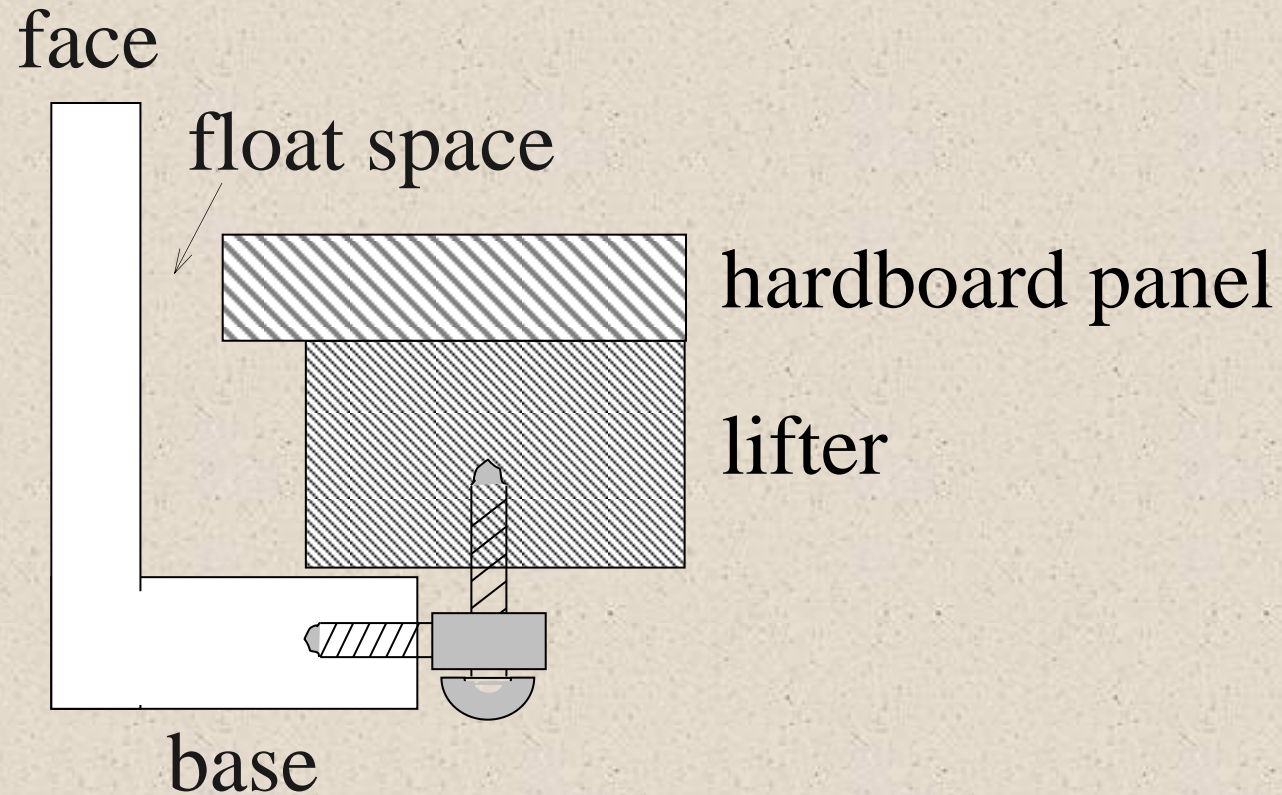
Layout Options

consider the
possibilities



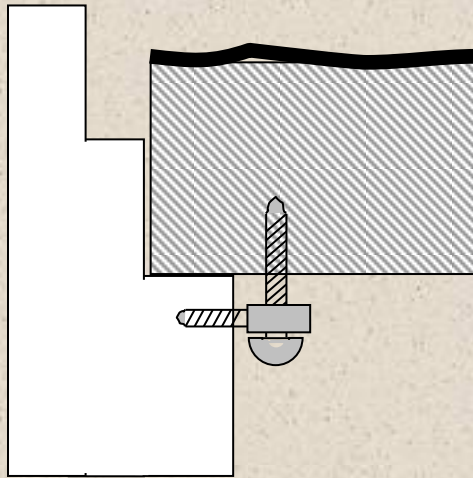
Hardware & Fitting

Float Definitions

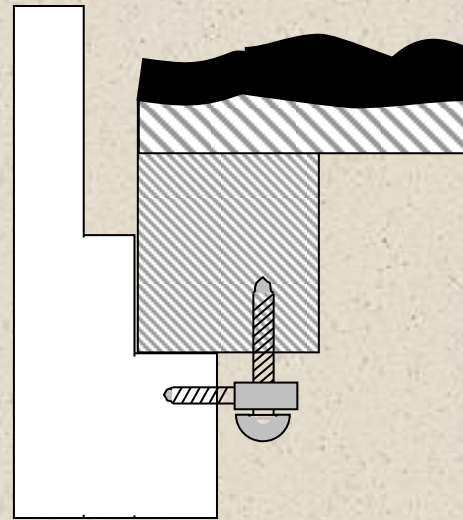


Depth of Steps

When selecting a profile, pay attention to recess depths

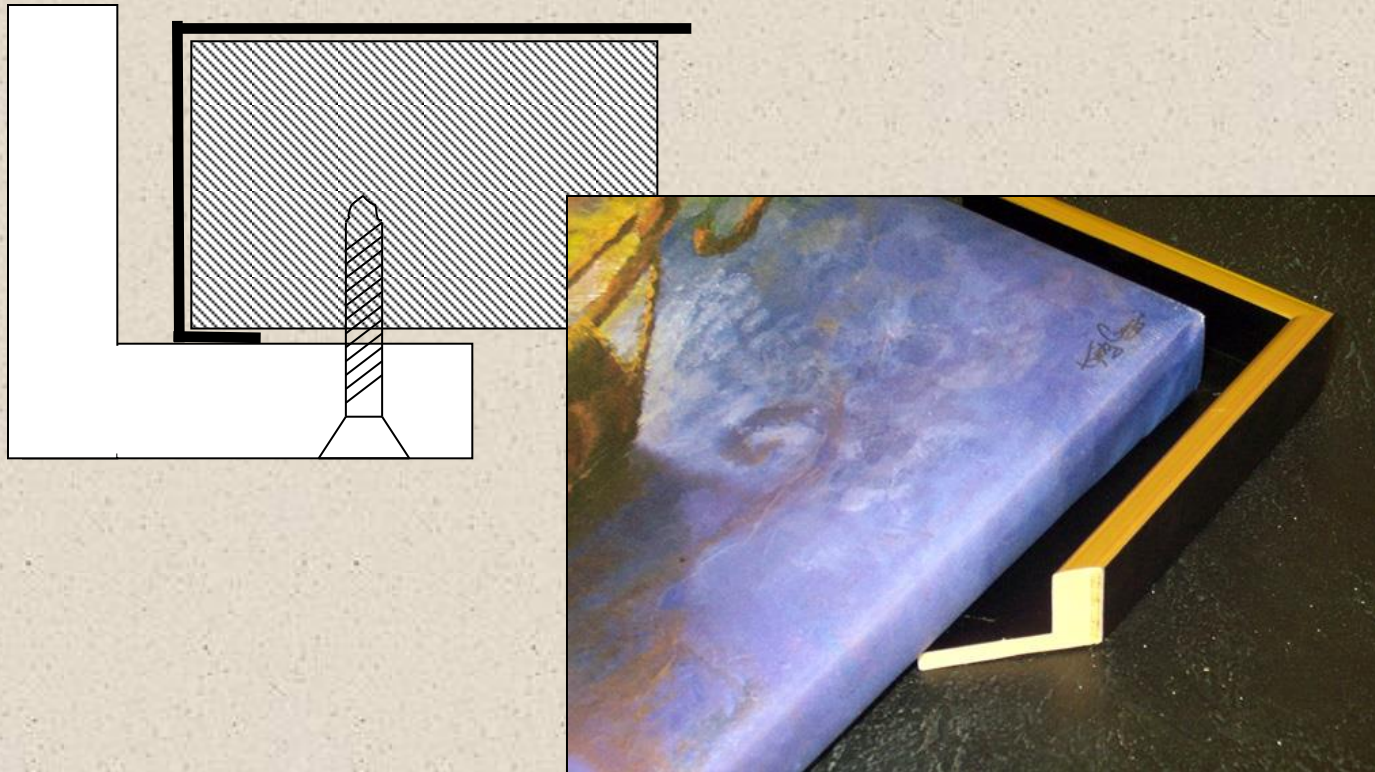


Solid Panel



Cradled Panel Box

Standard Canvas Mount



Float and Recess Spaces

- Traditional Stretched Canvas

Float Space $\frac{1}{32}$ " to 1"

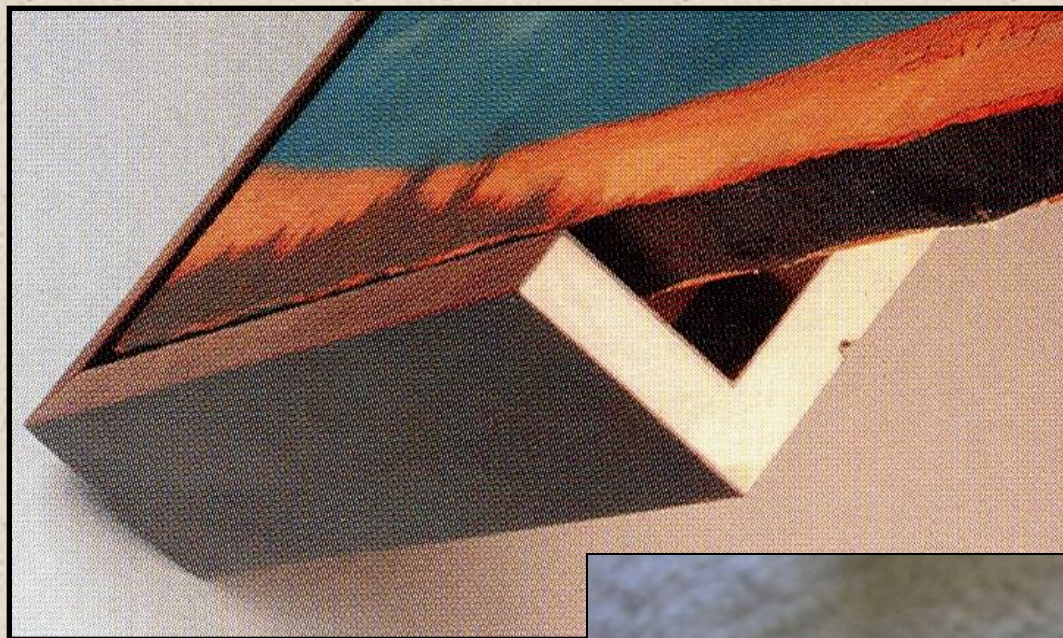
Recess $\frac{1}{32}$ " to $\frac{1}{16}$ "

- Encaustic

Float Space $\frac{1}{8}$ " to $\frac{1}{2}$ "

Recess $\frac{1}{8}$ ", $\frac{1}{4}$ ", up to $\frac{1}{2}$ "

Recesses must protect the surface of the painting



Traditional
1/16" to 1/8"
clearance
for canvas

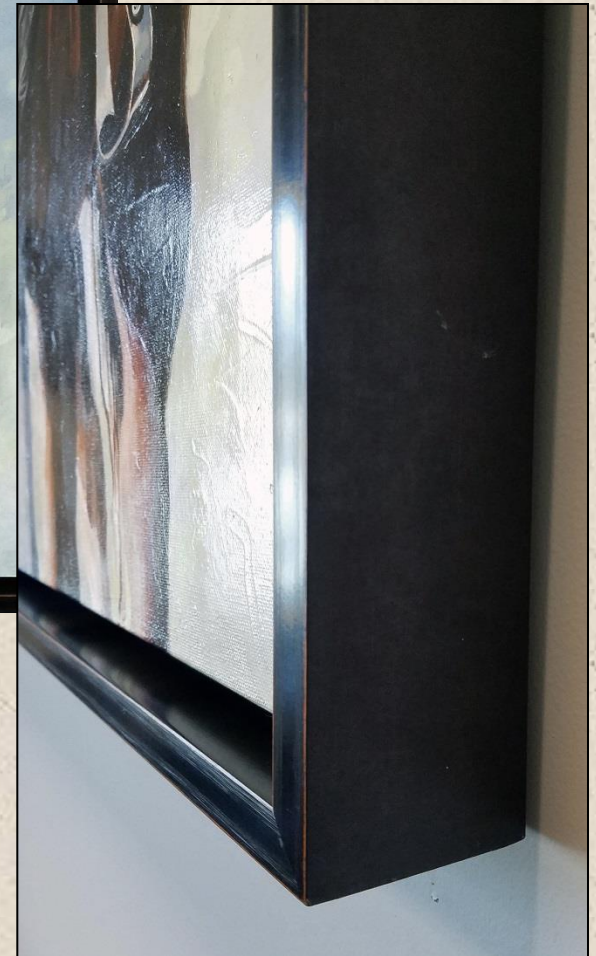
There is no set
clearance for
encaustic





Canvas set to
bottom of frame

Original oil 40x30"
Added depth enhanced the drama
and better showcased the art.



Hardware Options



Straight, Combo, Phillips

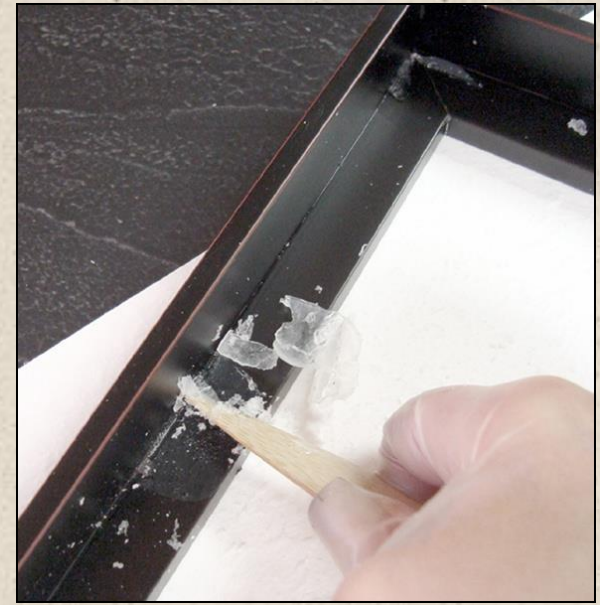


Offset Clips

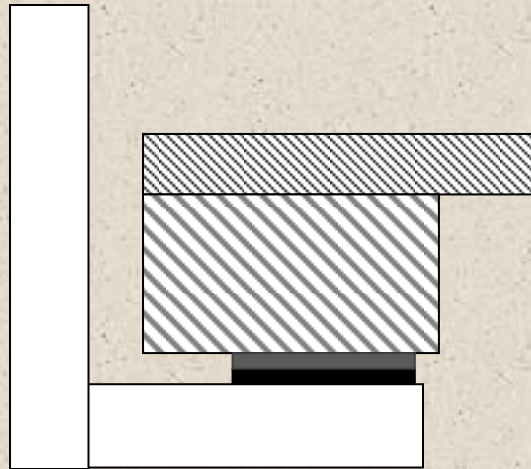


No Glue...

Nightmare on Silicone Street



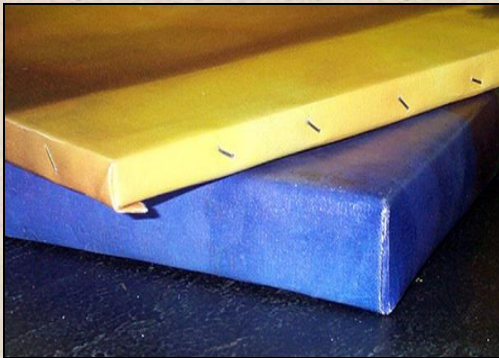
Reusable Mount



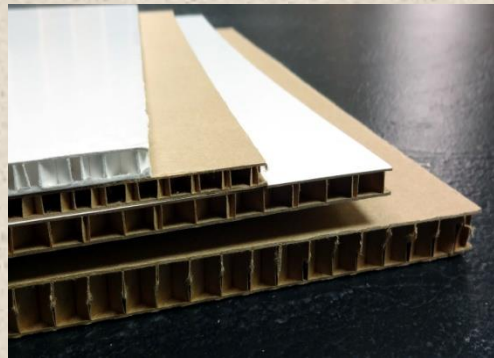
Long base

Velcro Attachment

Substrates for Floats



Bars & Strainers



Honeycomb



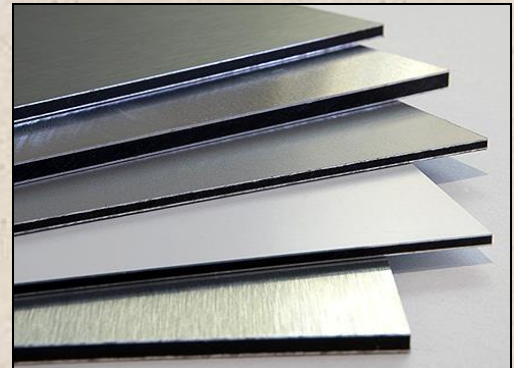
Cradled Panel



Poured Panel



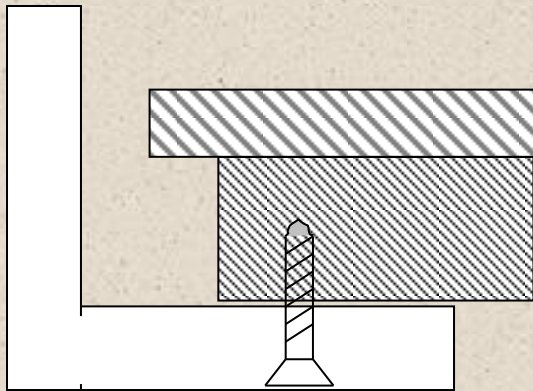
Hardboard



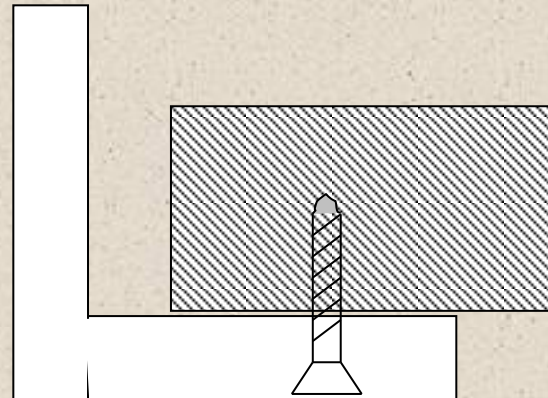
Composite

Hardboard Mounts

Lifted Float
painted panel
overhangs a platform

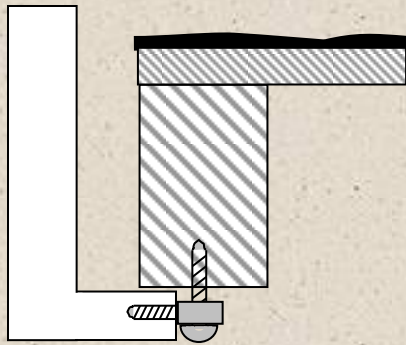


Solid Mount
painting is the platform

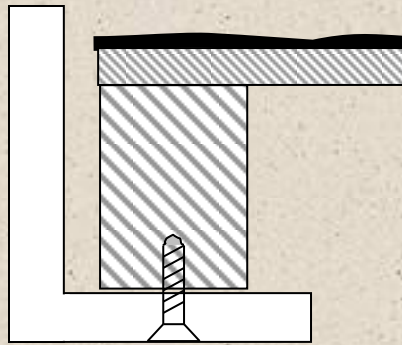


Long Base L-shape Floats

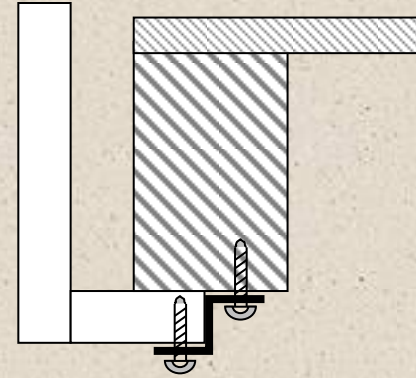
Cradled Box Mounts



Short base
w/screw eye

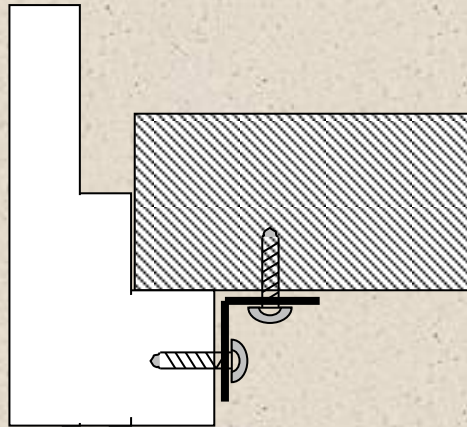


Long base
w/FH screw

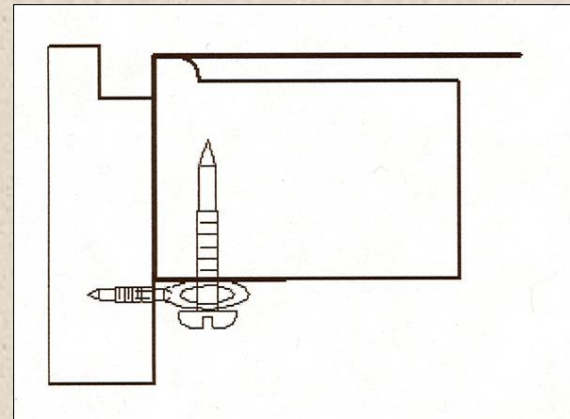
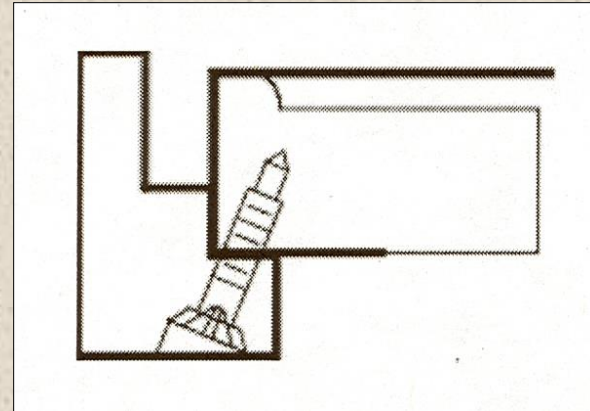


Short base
w/offsets & RH

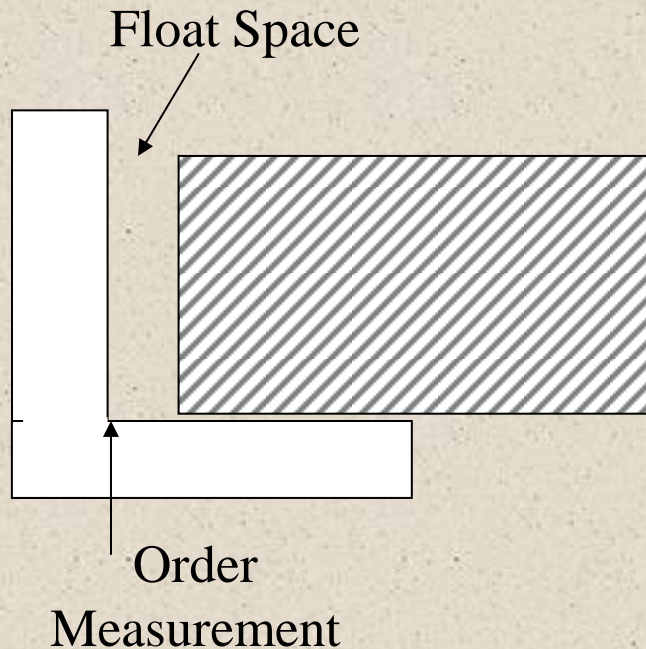
Step Float Mounts



Step Float
w/solid mount
& offset clip



Measurements



- Float frames are cut to exact size.
- No allowance is added.
- Determine desired float space.
- Double the float space and add to the art size.

Example:

Art measures 16" x 20" + 1/4" float space
Order chop 16-1/2" x 20-1/2"

- For out of square art,
order frame to fit larger dimension.

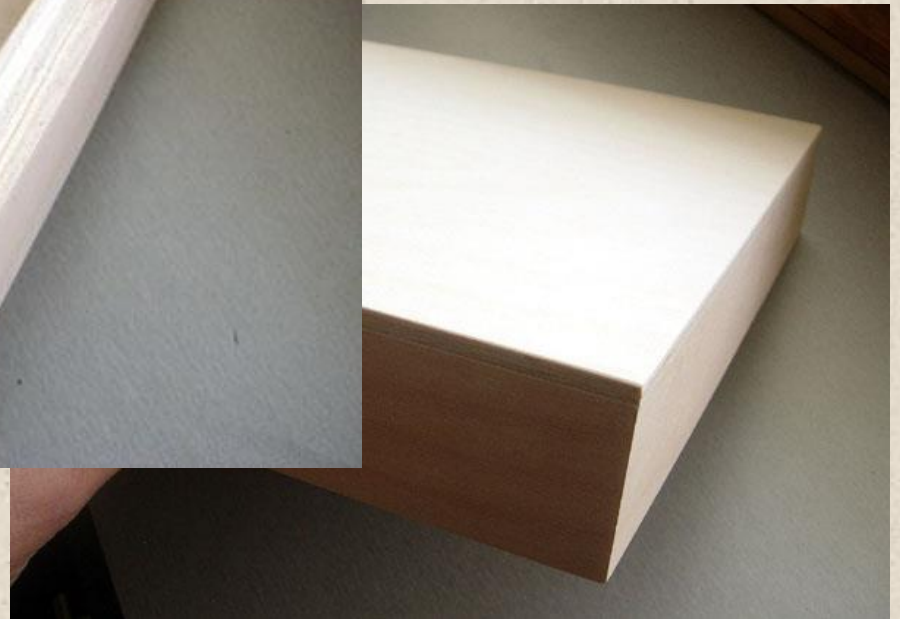
Example:

Art measures 16" across top,
16 -1/8" across bottom,
20" left side, and
20 -1/16" right side
Order chop to fit 16 -1/8" x 20 -1/16"
plus float space.

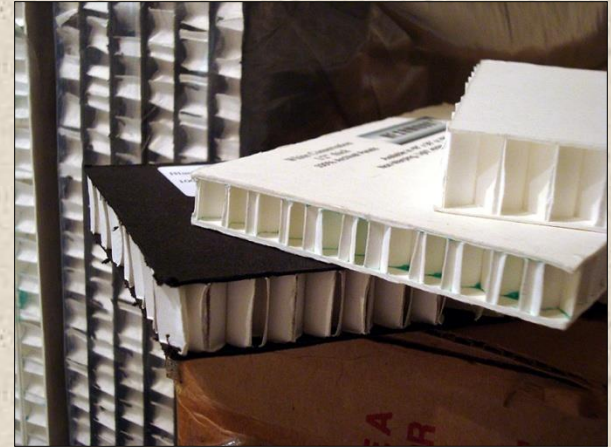
Encaustic Art



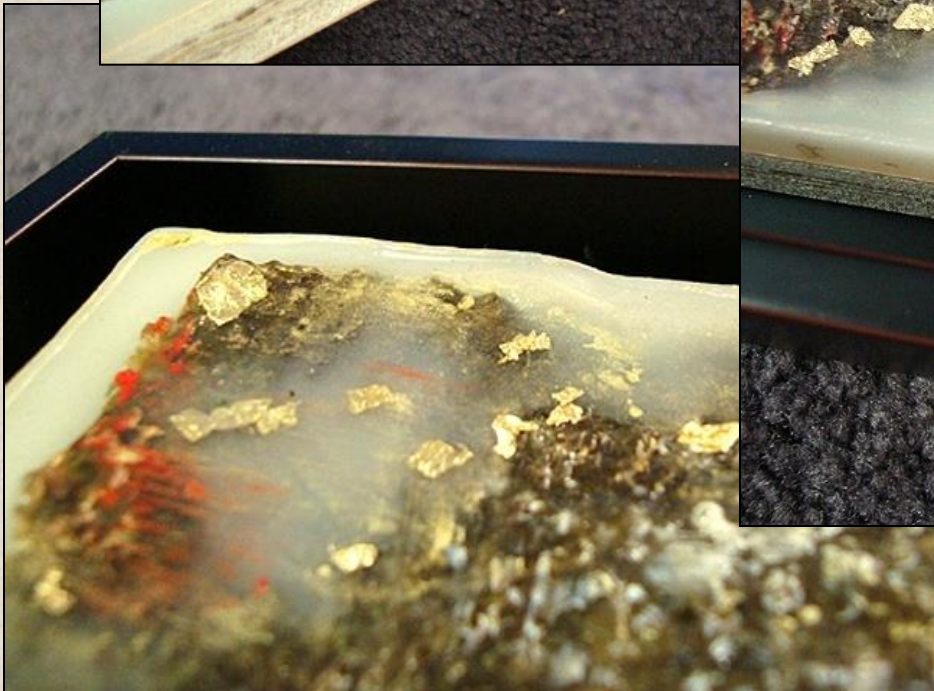
Cradled Boxes



- Substrates
 - Cradled Box
 - Hardboard
 - Tycore & Hexamount
- Surface
 - Uneven, level
- Edging
 - Squared & Clean
 - Deckle Drip



Encaustic Pour

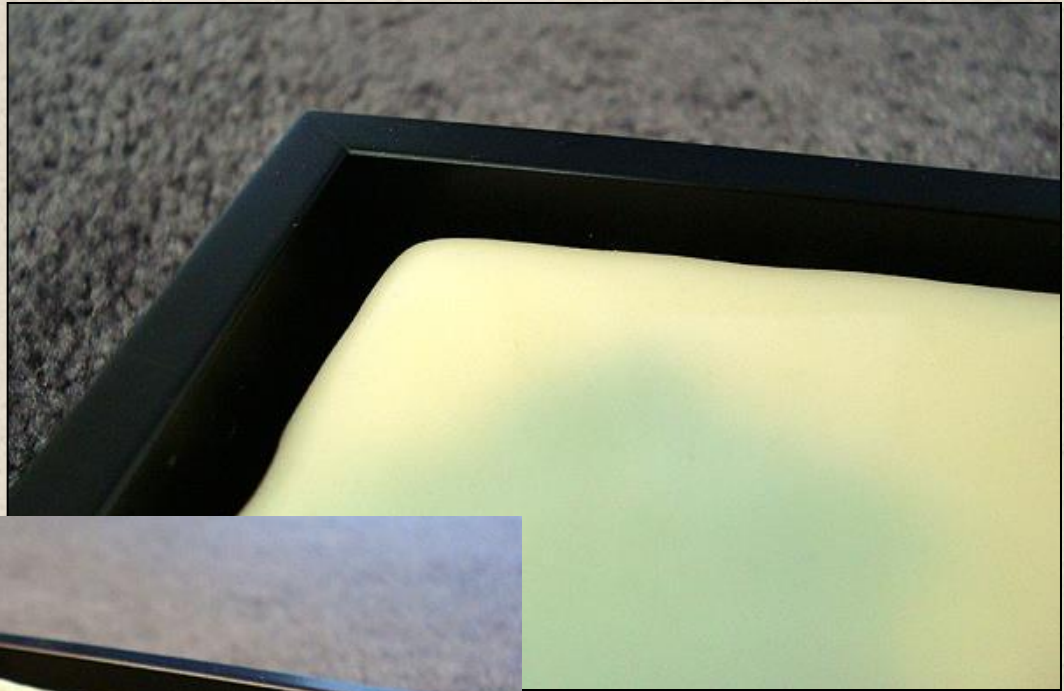
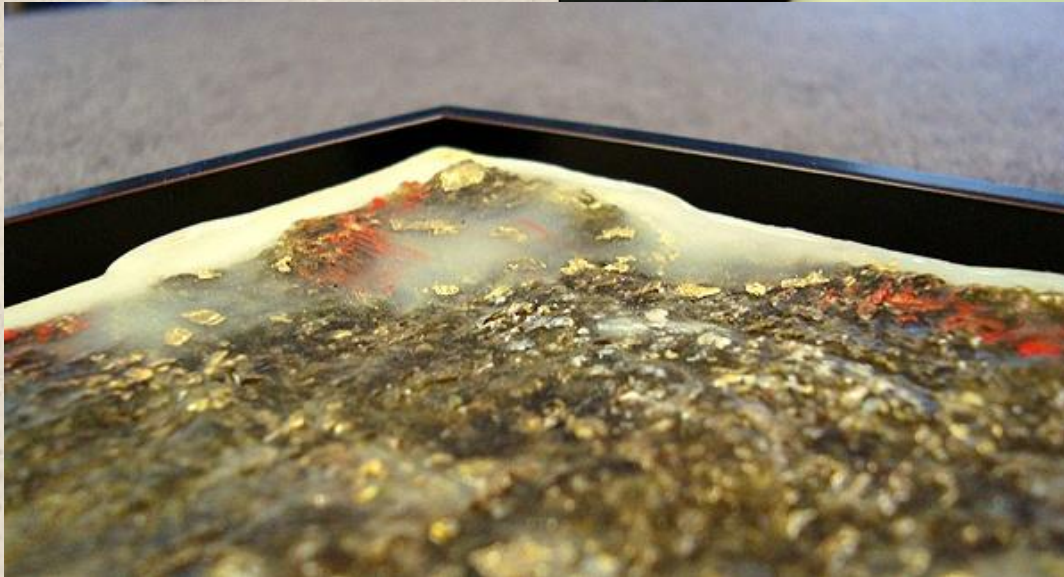


Edges



Surfaces

Rough,
Uneven



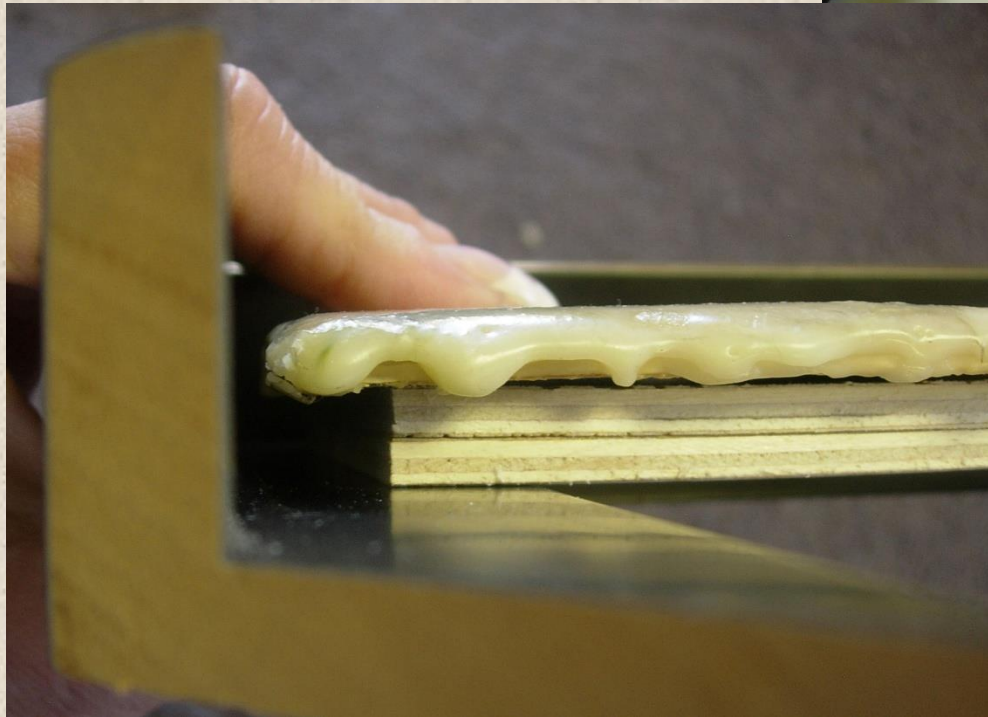
Smooth,
Level





Recess From
Frame Face

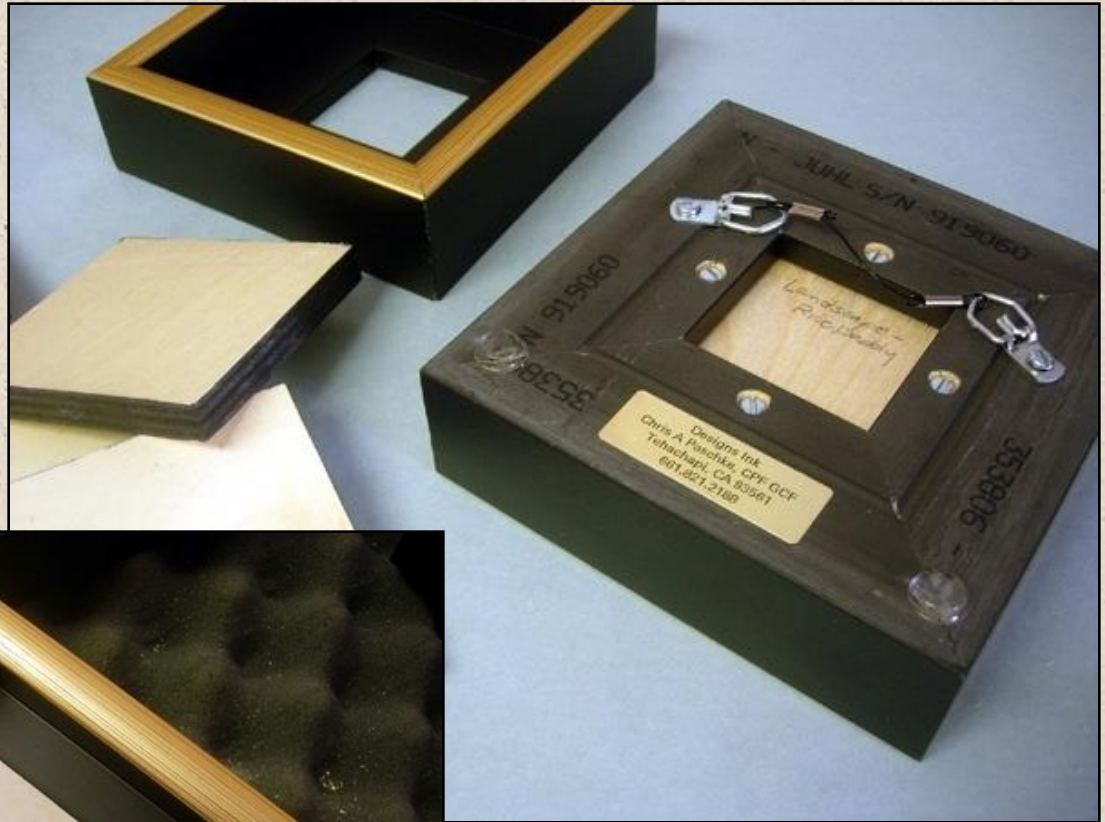
Too far back
Lifters needed
to raise the art.

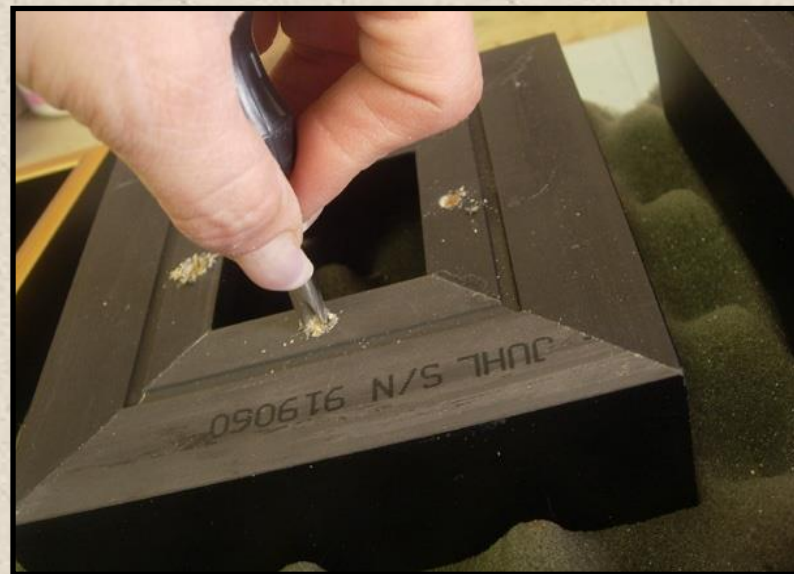
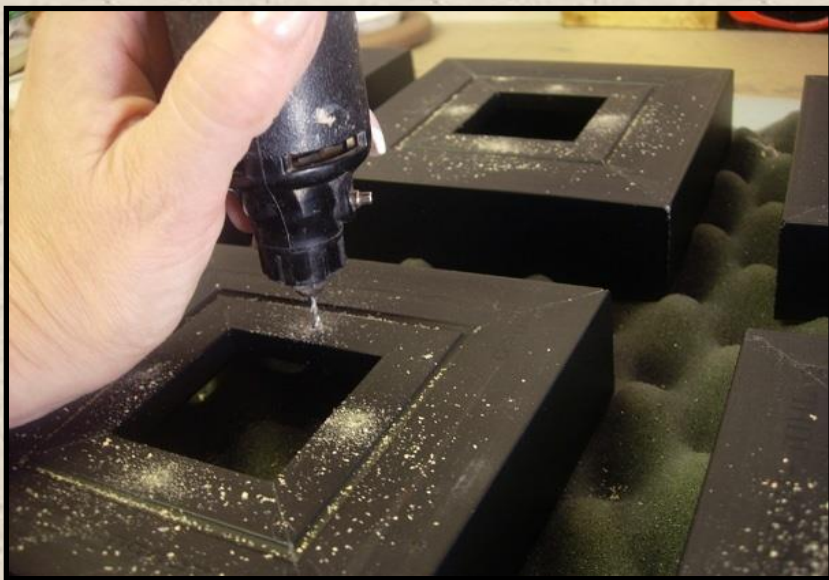
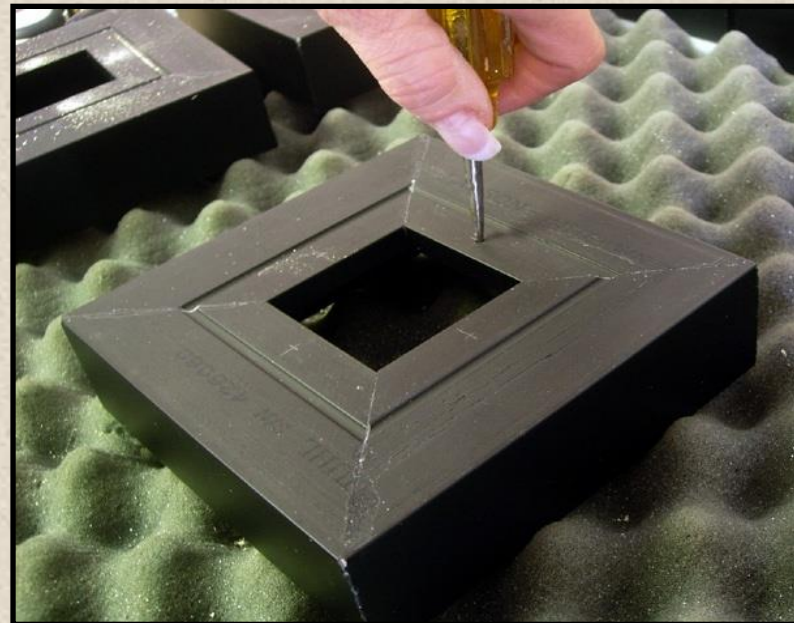
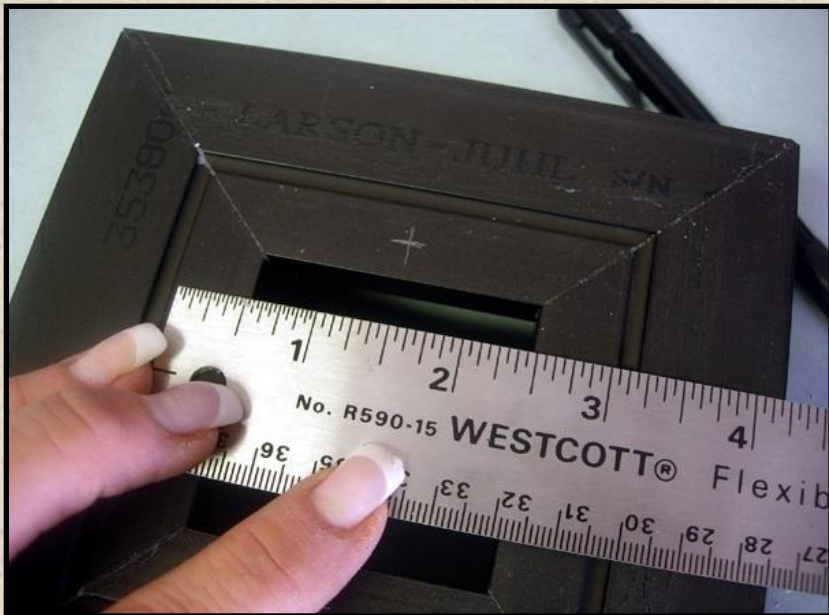


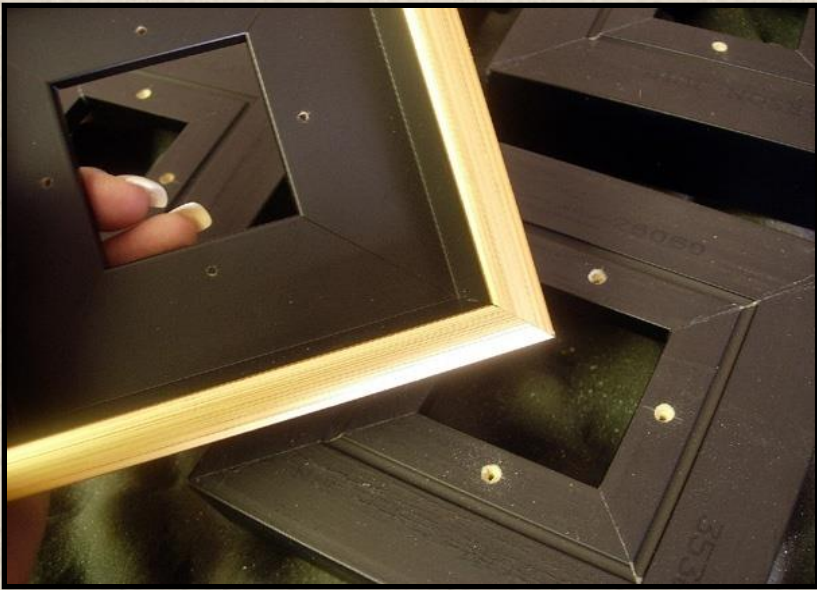
1/8" - 1/2"
Float Space

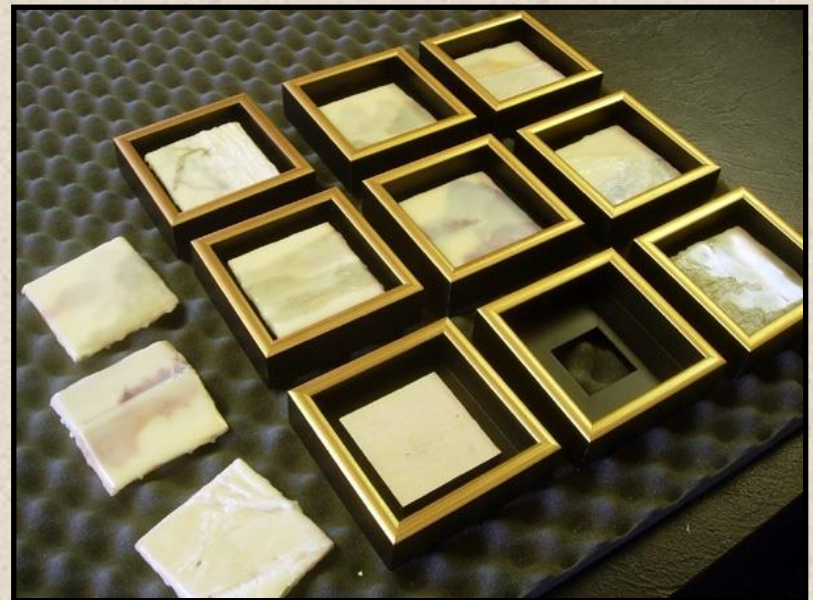
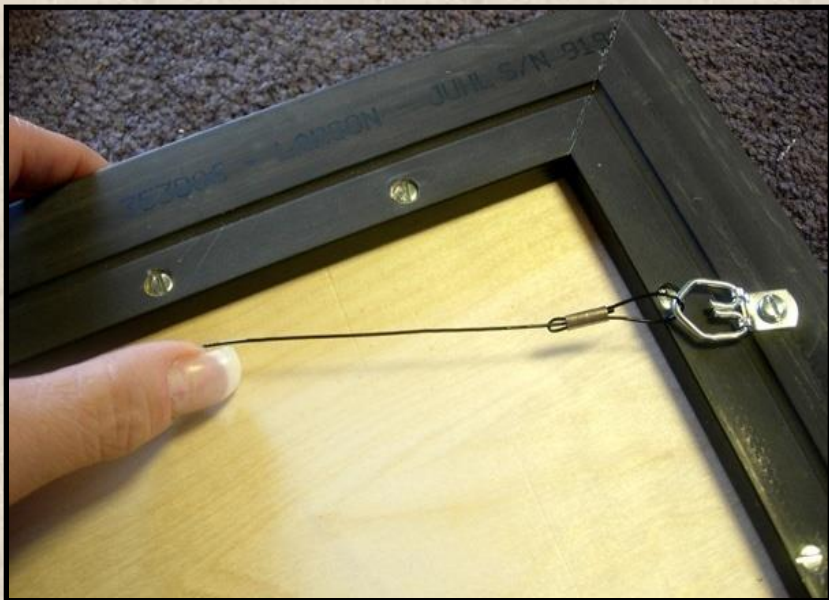
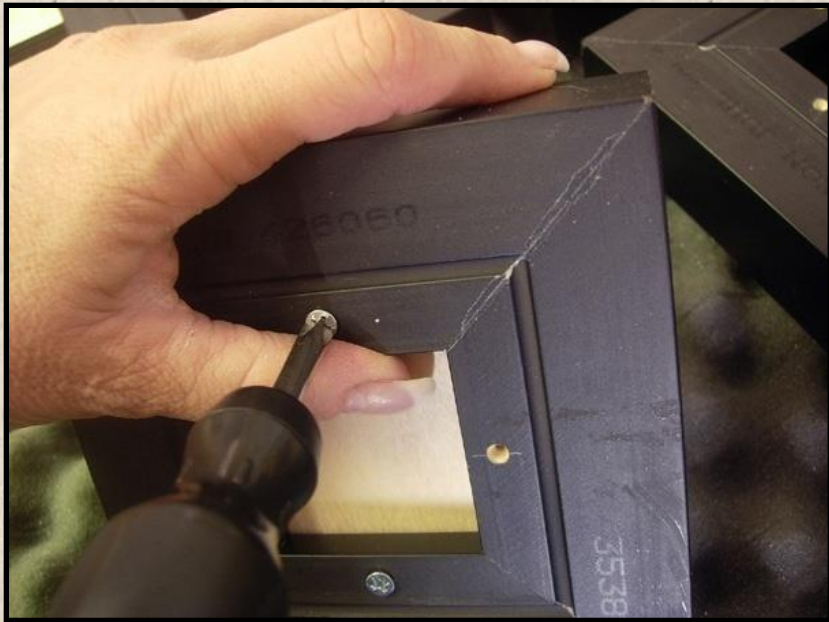


Reusable Platform Float











Over 20 years of Paschke articles
Designs Ink Article Archive/Reference Library

www.DesignsInkArt.com/library.shtml



Chris A Paschke, CPF GCF
Designs Ink
Tehachapi, CA 93561
661.821.2188

